

EPA Regulations Impacting Rural Diesel Powerhouses

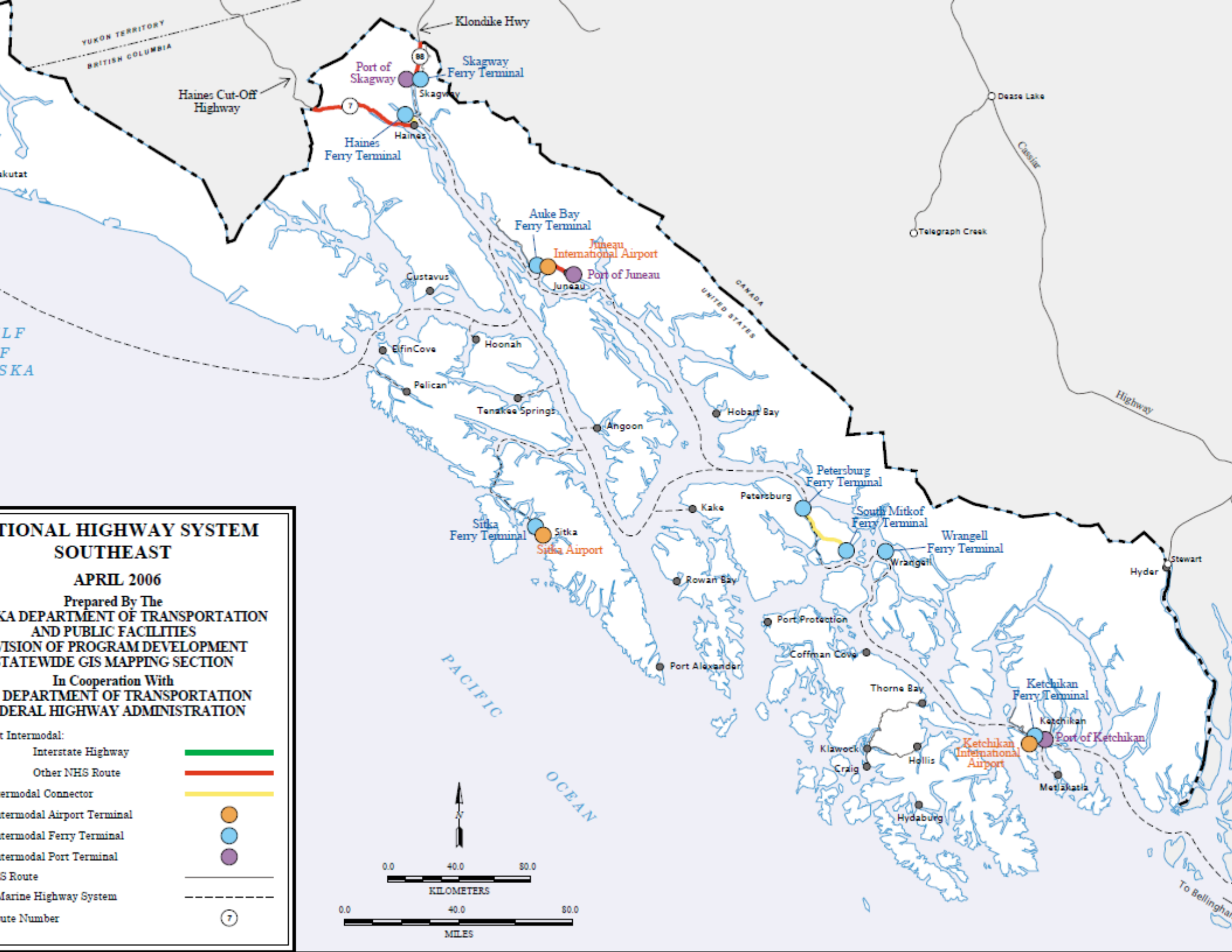


DAVID LOCKARD
ALASKA ENERGY AUTHORITY
SEPT. 15, 2010

RICE NESHAP Rules



- RICE: Reciprocating Internal Combustion Engines
- NESHAP: Nat'l Emission Standards for Hazardous Air Pollutants
- In March 2010 the EPA excluded all existing diesel engines in “rural” Alaska from most RICE NESHAP requirements, including the use of ULSD fuel.
- “Rural” is defined as “not accessible by the Federal Aid Highway System (FAHS)



**NATIONAL HIGHWAY SYSTEM
SOUTHEAST**

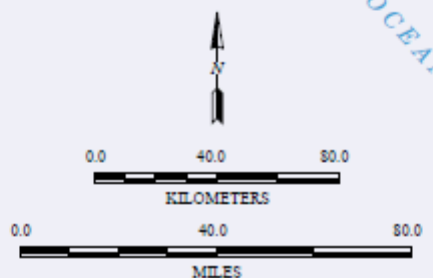
APRIL 2006

Prepared By The
ALASKA DEPARTMENT OF TRANSPORTATION
AND PUBLIC FACILITIES
DIVISION OF PROGRAM DEVELOPMENT
STATEWIDE GIS MAPPING SECTION

In Cooperation With
FEDERAL DEPARTMENT OF TRANSPORTATION
FEDERAL HIGHWAY ADMINISTRATION

Legend:

- Intermodal:
 - Interstate Highway —
 - Other NHS Route —
 - Intermodal Connector —
 - Intermodal Airport Terminal ●
 - Intermodal Ferry Terminal ●
 - Intermodal Port Terminal ●
 - NHS Route —
 - Marine Highway System - - -
 - Route Number 7



Ongoing Issues



- Lubricity: some fuel suppliers are not adding lubricants to ULSD before delivery, expecting it will be added after barge delivery. Lubricants such as xylene may bring serious hazmat issues to rural Alaska. AK is one of 20 states that do not require that fuels meet ASTM D-675 standards, which would address this problem.
- Definition of “Reconstruct” for stationary diesel engines is not clear
- Used oil blending may not be allowed

“Stay tuned...”



Contact me if you would like to get on a distribution list regarding new EPA regulations that affect stationary diesel engines in rural Alaska.

David Lockard

771-3062

dlockard@aidea.org