

Bartlett Regional Hospital 2018 statistics

Number of patient days:

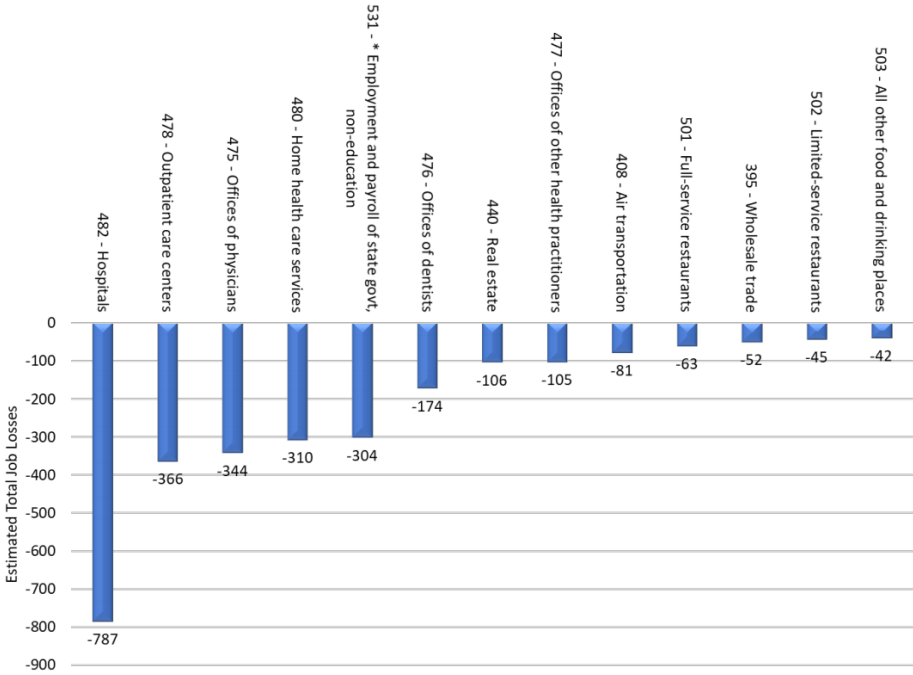
Med/Surge	4,795
CCU	1,062
Mental Health	3,493
OB	804
Newborn	702
RRC	3,936
ER Visits	15, 913
Number of births	315

Bartlett Regional Hospital Revenue 2018

Salaries and Benefits	\$65,935,692
Medical Professional Fees	\$ 939,526
Physician Contracts	\$ 3,668,695
Non-Medical Professional Fees	\$ 2,564,111
Total Salaries and Benefits Operating Costs	<u>\$ 73,108,024</u>
Total Expenses	\$ 98,877,565
Total Revenue	\$102,000,000

The economic impacts of Medicaid expansion

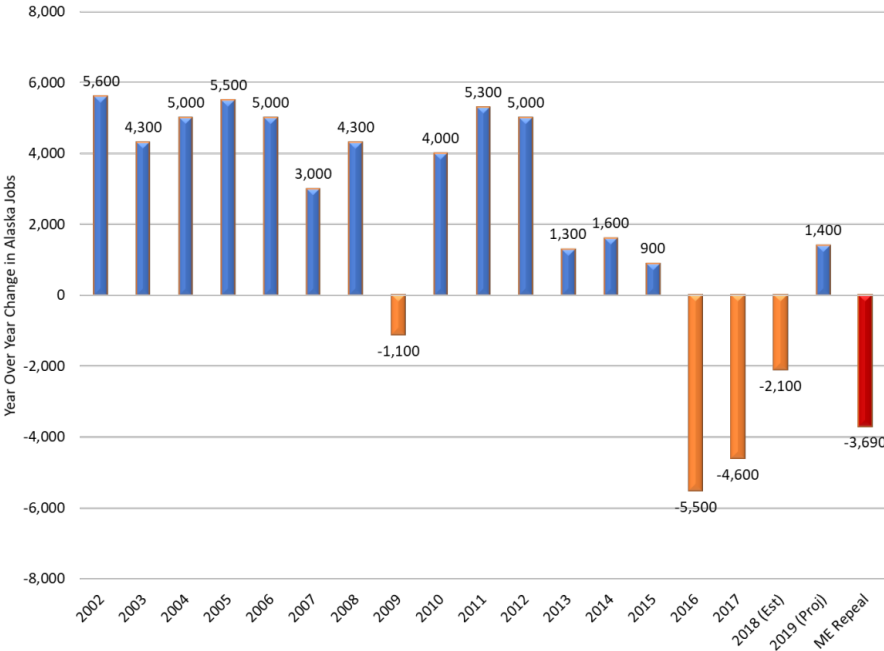
Figure 1. Top 15 Affected Employment Sectors, Adjusted Scenario



Source: Halcyon Consulting, 2019.

The economic impacts of Medicaid expansion

Figure 2. Projected Employment Losses Compared to Recent Job Growth, Adjusted Scenario



Source: Halcyon Consulting, 2019.

Medicaid Expansion Metrics

What does Medicaid Expansion cost Alaska?

Medicaid expansion is a powerful leverage of state funds. For 2019 the match is 93% which means for every dollar spent on expansion benefits the State pays 7 cents. While the program's total cost in FY18 was \$420 million the cost to the state of Alaska was just \$15.6 million, a 25.9 to 1 match.²

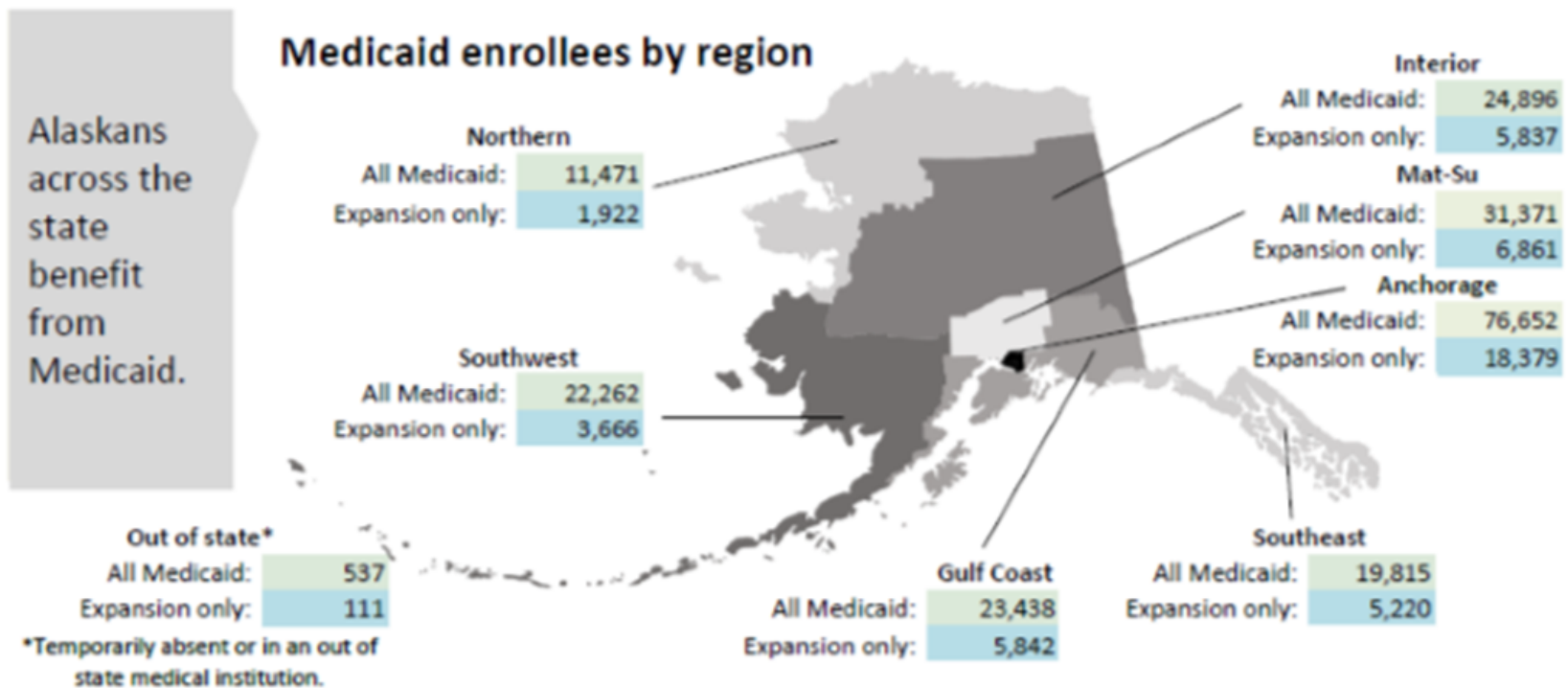
Medicaid Expansion Metrics by State Fiscal year³

Fiscal Year	Unduplicated Enrollees	State Spend		Federal Spend		Total Spend	
		Total (\$M)	\$ per Enrollee	Total (\$M)	\$ per Enrollee	Total (\$M)	\$ per Enrollee
2016	23,694	0.0	0	\$138.0	\$5,825	\$138.0	\$5,825
2017	40,717	\$6.8	\$167	\$371.1	\$8,946	\$377.9	\$9,113
2018	50,552	\$15.6	\$308	\$404.5	\$8,002	\$420.1	\$8,310

Changes in Medicaid enrollment and spending

Alaska is now covering 79,000 (63%) more Medicaid enrollees per month and using 11% fewer state dollars than it did four years ago.

Medicaid Enrollment by Region



2/18/19

6

Changes in Medicaid enrollment and spending

Alaska is now covering 79,000 (63%) more Medicaid enrollees per month and using 11% fewer state dollars than it did four years ago.