

Abundant Affordable Energy

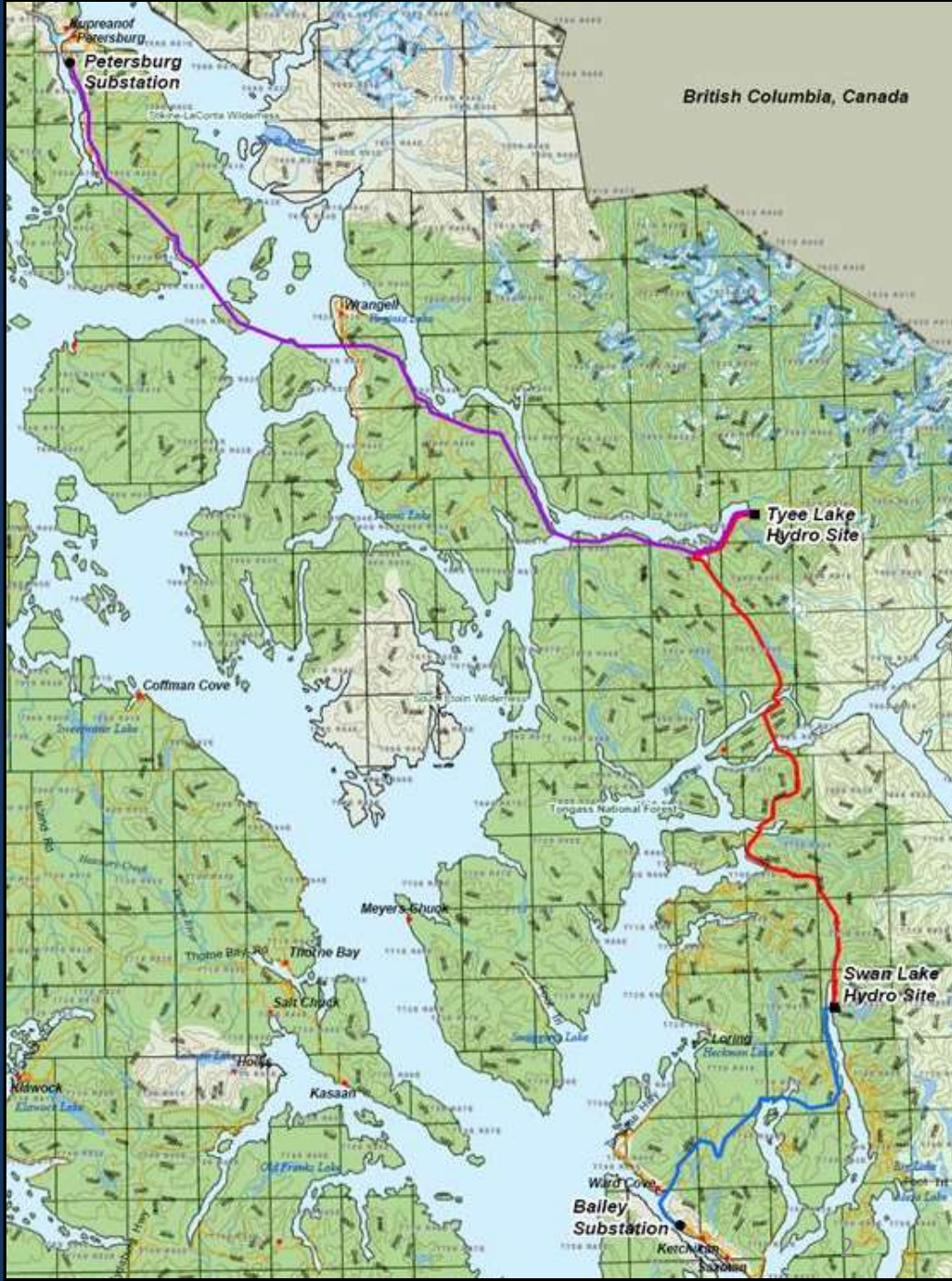
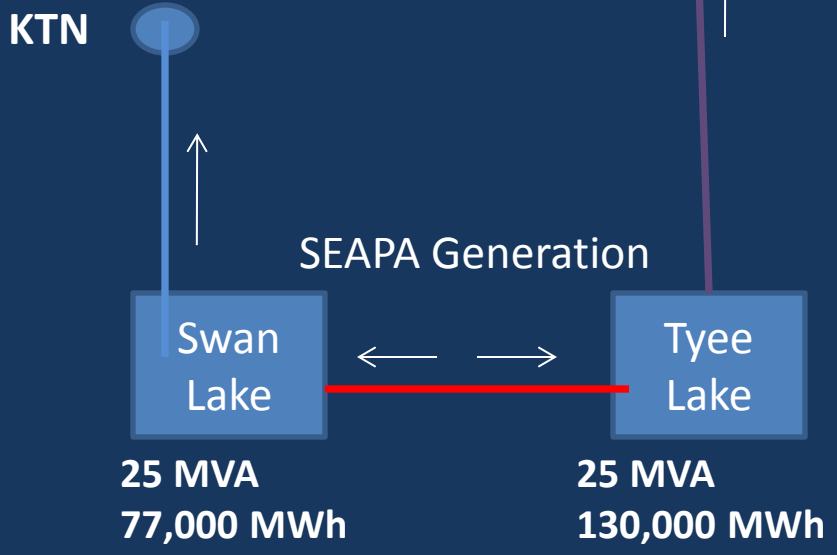
“The cornerstone of economic development”

Planning for the future...

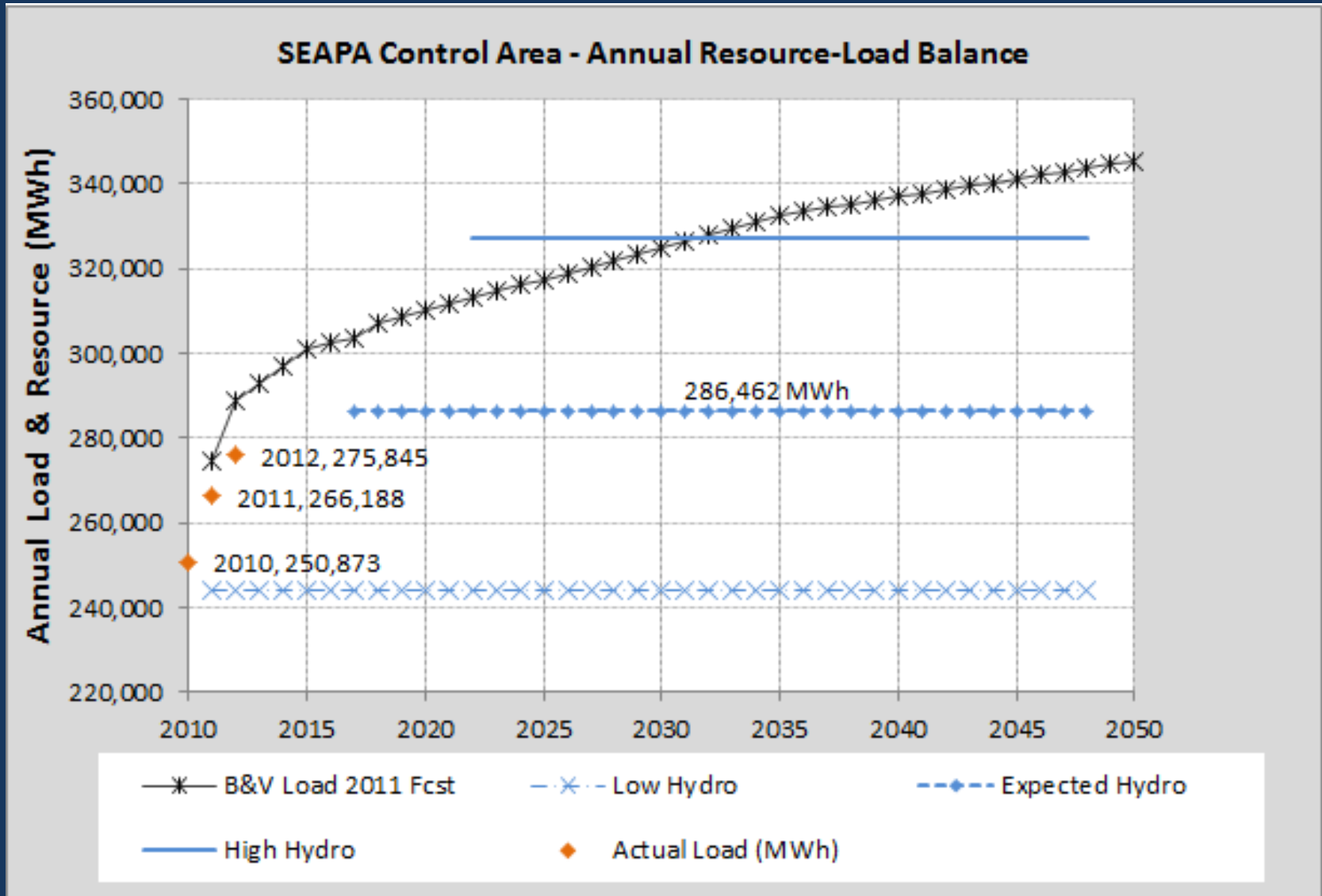
Southwest Alaska Power Agency

2011	2012
Municipal Population	Load MWh
PSG- 2967	55,404
WRG- 2382	38,509
KTN- 8199	181,932
Totals-13,548	275,845
BV Load Forecast	289,016

Total Area Hydro Capability (MWh)	
Avg.	286,000
High	336,000
Low	236,000



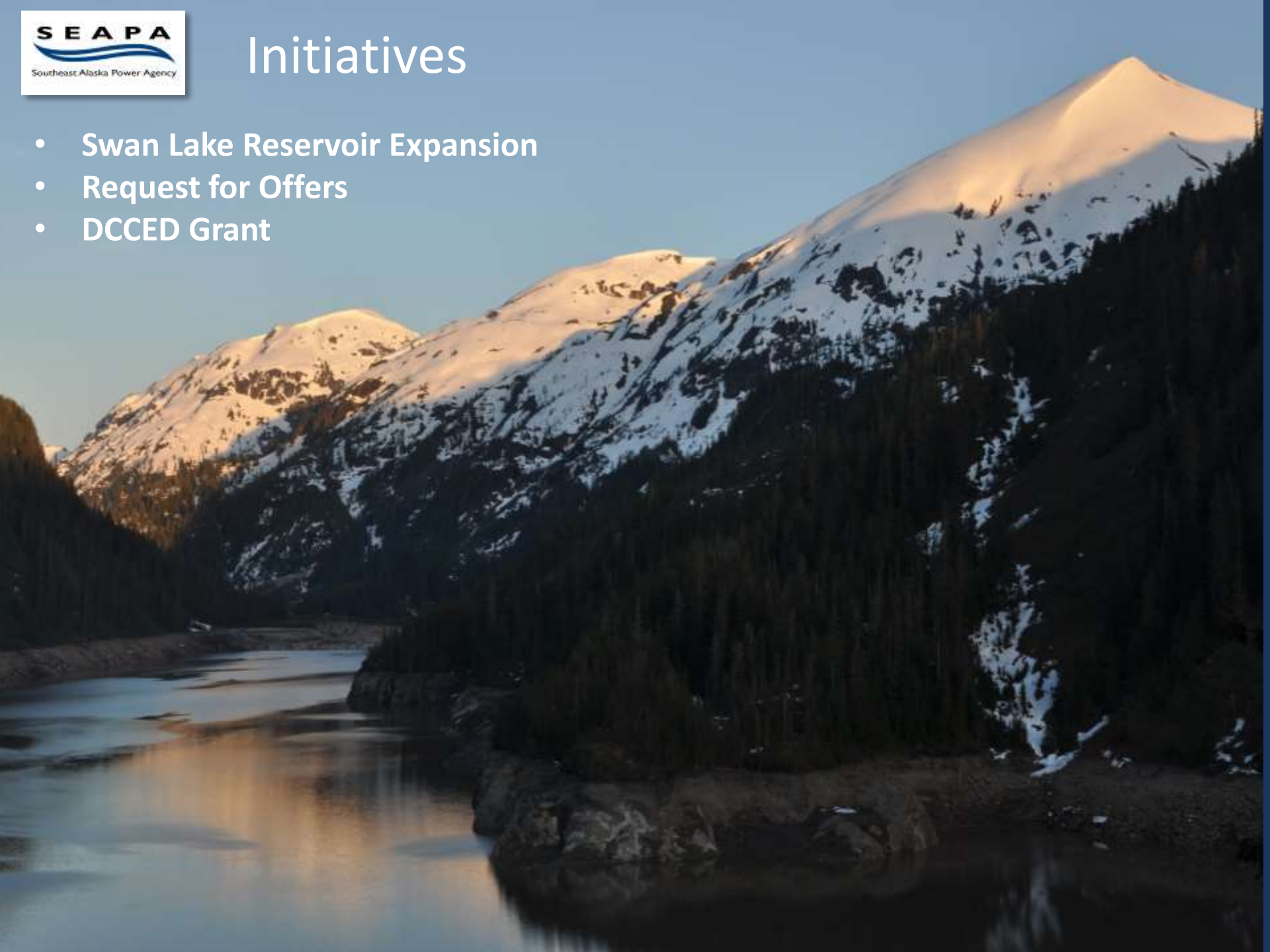
SEAPA Control Area – Load Growth



Note: KPU hydro and diesel generation is shown lumped simply as KPU generation for space saving reasons.

Initiatives

- Swan Lake Reservoir Expansion
- Request for Offers
- DCCED Grant



Swan Lake Dam



Swan Lake Reservoir Expansion Project





Request for Offers

Four Options:

1. Firm fixed Energy delivery schedule by month
2. Variable Power and Energy schedule (5 year blocks)
3. Propose a delivery schedule within 35% of Options 1&2
4. Joint development of a resource

Schedule:

Notice of intent to offer by 4/15/2013

Options 1, 2, 3 Submit by 9/30/2014

Option 4 Submit by 11/29/2013



Department of Commerce, Community & Economic Development

\$3MM DCCED Grant: Planning and pre-construction work for the next generation of hydroelectric projects in Southeast Alaska.

Follow-up activities to S.E. Integrated Resource Plan

- Hydroelectric storage
- Hydro site evaluation
- System stability & transmission interconnection studies
- System load balance modeling
- Project management
- Business analysis & PSA development



Challenges and Managing Risk

- Accurate resource assessment
- Accurate construction estimates
- Size and timing of projects
- Evolution of technologies
- Funding and potential impact to rates
- Partnering to share risk

Questions

