

Getting to '22

Short Term Resilience Plan

Robert Venables, Kaitlyn Jared, Katherine Bell



What is needed now, to get through to '22?

Robert Venables, SEC Executive Director

What is the goal of this planning document?

- To immediately shore up the regional economy, protect it from additional decline
- Provide a caretaking role for our institutions
- Ensure the fundamentals of our economy will be in place by 2022, once the COVID-19 healthcare crisis has passed



Collaborations and Partnerships

- Return to Cruising Discussions
- COVID-19 and Tourism (Skagway, Wrangell, Hoonah, Angoon)
- Southeast Alaska Solid Waste Authority
- Alaska Shellfish Growers Association, Alaska Mariculture Alliance, Alaska Mariculture Task Force
- Broadband Expansion: Byte Networking, Ketchikan Public Utilities, Alaska Power and Telephone, Cordova Telecom Connection to Yakutat
- AMHS Reform/Reshaping Work Group
- Beneficial Electrification and Biomass (AEA, REAP, ACEP, Utilities)

Top 10 Actions to Reinvigorate the Southeast Economy

1. Economic Disaster Declaration Request
2. Support Expedited Vaccine Distribution Planning
3. Work to Ensure Short-term Viability of the Seafood Sector
4. Plan for a post COVID-19 Southeast Alaska Economy and Health Care System
5. Plan to Regrow the Visitor Industry Post-Pandemic
6. Keep Southeast Alaskans in their Homes
7. Revitalization of Air, Ferry, Cruise, and Freight Transportation Services
8. Advocate for Childcare Prioritization in an Effort to Restart the Economy
9. Support Expedited Resolution to Solid Waste Shipping
10. Request Tariff Relief

Economic Disaster Declaration Request

The Governor should declare an economic disaster area for Southeast Alaska as a whole.

- The declaration is based on two economic failures:
 - The loss of the statewide summer tourism season due to COVID-19
 - The collapse of the regional Southeast salmon fishery due to poor returns, along with low prices
- Between April and September 2020, Southeast Alaska was down by more than 7,000 jobs, or 17% of its total workforce, compared to the same period in 2019
- Several of our municipalities have already submitted similar requests, including Juneau, Wrangell, Petersburg, Ketchikan, Sitka, Hoonah, and Haines; while other communities are moving towards this process

Support Expedited Vaccine Distribution

1

Ensure that the State of Alaska and Southeast communities are ready to accept COVID vaccines and have robust distribution plans

2

Communicate the importance of vaccinations to the broader community to ensure wide adoption once the vaccines are widely available

3

Create a higher level of understanding regarding the relationship between vaccine distribution and regrowth of the regional economy

Work to Ensure Short- term Viability of the Seafood Sector

Southeast Alaska has just experienced one of the worst salmon seasons in our history.

- Preliminary harvest values by the Alaska Department of Fish and Game show that the value to fishermen of the **Southeast Alaska salmon harvest fell by half (-50.8%)** from \$101.8 million in 2019 to \$50.1 million in 2020
- Measures **in response to the COVID-19 public health emergency** has suppressed demand for seafood products and **driven ex-vessel prices significantly lower** than previous years
- There has also been a **lack of ability to move seafood and mariculture product to market** due to the pandemic

Southeast Alaska has just experienced one of the worst salmon seasons in our history.

Work to Ensure Short- term Viability of the Seafood Sector

- Support request of a fisheries disaster determination by Governor Dunleavy
- Support additional funding for the PPP loan program or state or federal grants through an additional federal distribution
- Work to revive market in order to rebuild regional economic seafood/mariculture systems

Plan for a post COVID-19 Southeast Alaska Economy and Health Care System

There are vulnerabilities within the health care system that are likely to be exacerbated following the COVID-19 crisis, including Medicaid cuts, reduced access to health care insurance

Advocate	Advocate for the development of a state fiscal plan so that we have a plan to fund state services
Identify	Identify funding capabilities of the state going forward so that the region can continue strong health care operations
Ensure	Work to ensure that the regional populace is healthy, has access to health care, access to health care insurance, and has the community support they need to make healthy choices

Plan to Support and Regrow the Visitor Industry

- Support the creation of region-wide safety procedures and best practices for the tourism industry in Southeast Alaska (CDC, TBMP, Industry, Canadians)
- Work as a catalyst to promote implementation of these regional procedures to communities and stakeholders
- Communicate the importance of the tourism industry, and more specifically, the importance of a successful recovery of the cruise sector to lawmakers and communities; advocate for the swift return of business (including cruise) to the region in order to maximize potential economic impacts for 2021
- Support ATIA's communication efforts to amplify community reach for latest industry updates
- Support and collaborate with communities and entities to offer new programs and products catering to independent travellers

Keep Southeast Alaskans in their Homes

Numerous renters across the region are facing eviction.

- Support emergency rental and homeowner assistance in Southeast Alaska, along with the organizations that are distributing funding
- Prioritize those who are in immediate danger of eviction first
- Explore creative mortgage options to reduce mortgage payments for those unable to make payments during this pandemic emergency
- Develop quarantine housing options across the region to support the need for isolation to address overcrowding and health issues
- Support housing disaster assistance for organizations such as the Tlingit and Haida Regional Housing Authority, to provide assistance during severe weather events

Revitalization of Air, Ferry, Cruise, and Freight Transportation Services

Transportation is the critical to a healthy regional economy, and Southeast Alaska's transportation networks have been disrupted during the pandemic.

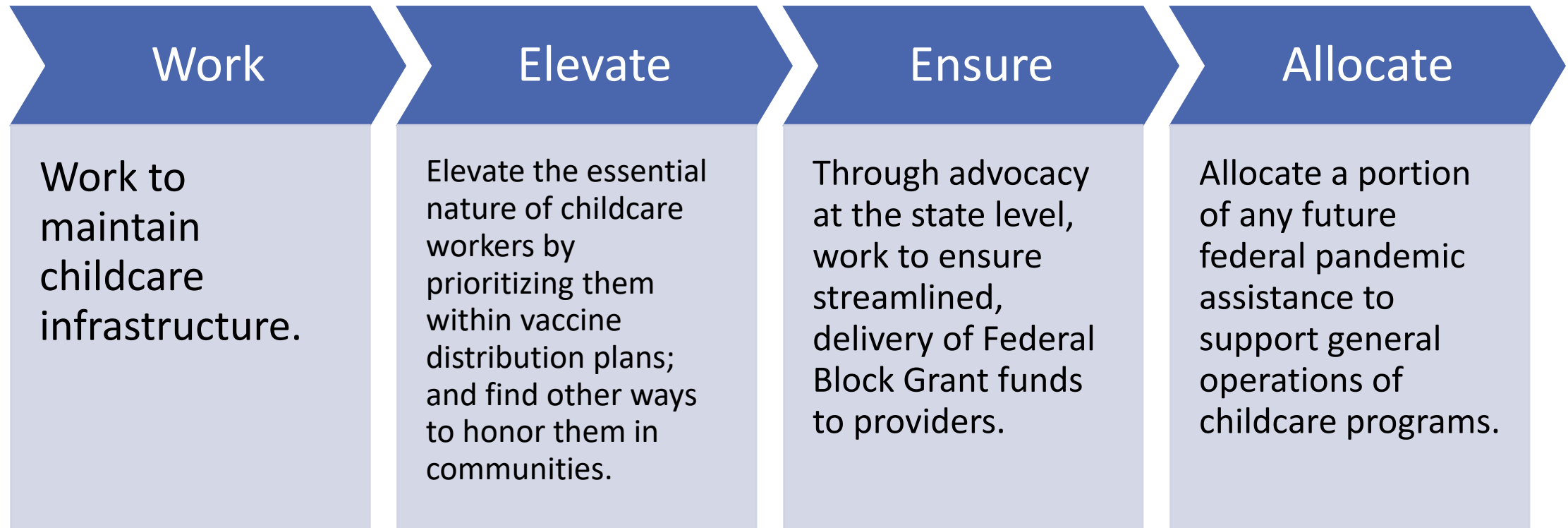
In 2020, air passenger traffic to the region is down by 58% over 2019 levels, cruise passengers are down by 99.9%, and ferry traffic has been severely curtailed.

Revitalization of Air, Ferry, Cruise, and Freight Transportation Services

- Set strategic direction across transportation providers to operate safely and within shared mitigation measures as the world recovers
- Support transportation providers in the public and private sector as they work towards re-building services and routes

Advocate for Childcare Prioritization in an Effort to Restart the Economy

A fully functional childcare system needs to be in place to get the region back to work.



Support Expedited Resolution to Solid Waste Shipping

**Some Southeast Alaska communities
are at risk of losing solid waste
shipment options due to new fire
mitigation requirements**

Support the work of communities and shipping companies to create a safer system

- Under a timeframe that allows communities to move to new systems of baling, compacting
- And/or procuring closed containers without losing critical shipping access
- Or acceptance of temporary solutions while permanent solutions are being developed.

Request Tariff Relief

- In recent years new tariffs on seafood, timber, and minerals have been detrimental to the Southeast Alaska economy
- The extra burden, higher costs, and reduced market access as a result of these tariffs have become untenable during a period of a depressed pandemic economy

Request Tariff Relief

Work with the Alaska congressional delegation to support new trade negotiations with China that reduce or eliminate onerous tariffs on Southeast Alaska goods.

We know these are tough times. We want to know what measures you are taking, or planning to take, to help your Southeast Alaska business, community, or organization viable until the Southeast Alaska economy gets back on track.

<https://www.surveymonkey.com/r/SECmapping>

Resilience Mapping Survey and Prioritization Exercise