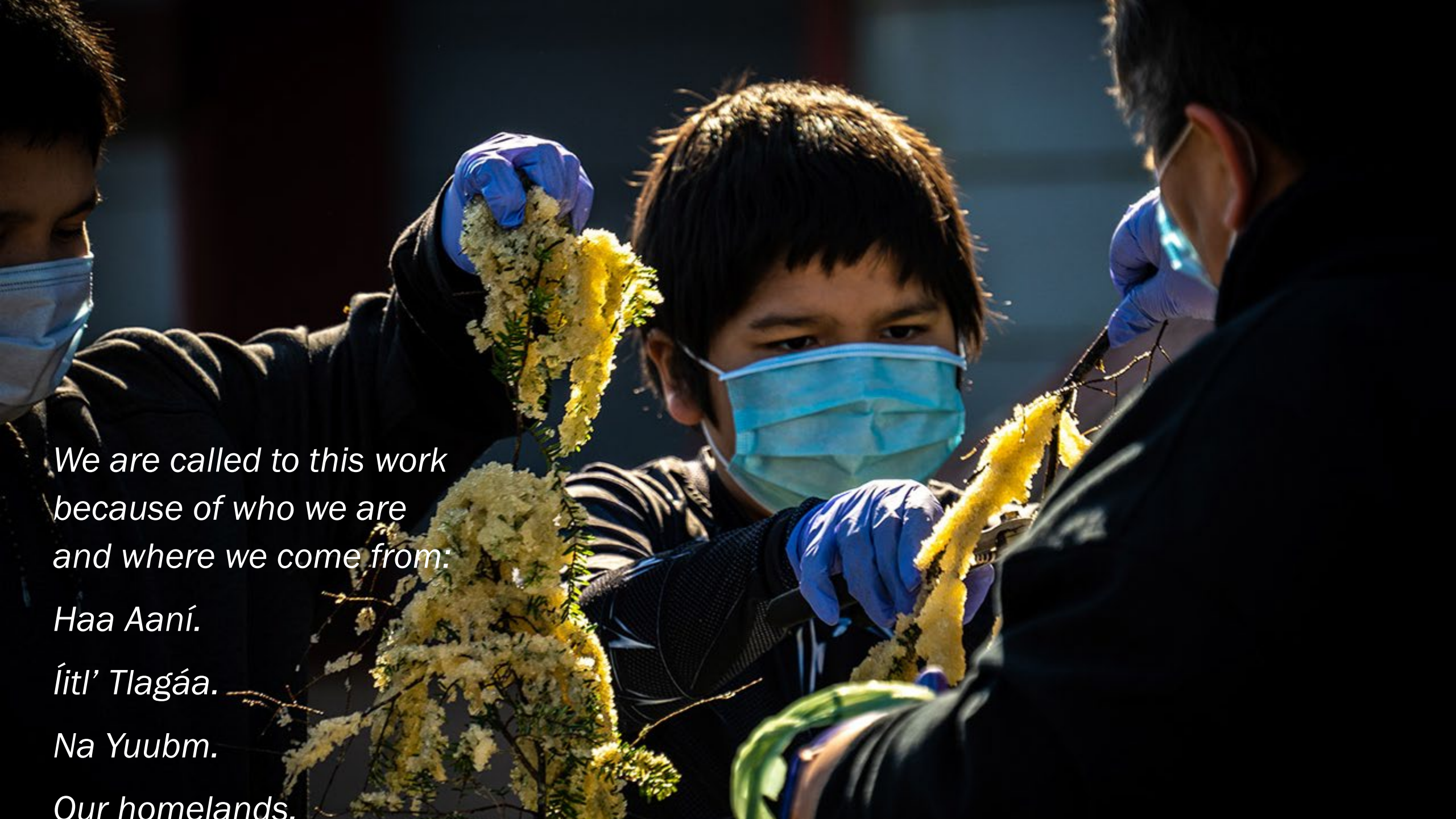




SEALASKA

WELCOME!



*We are called to this work
because of who we are
and where we come from:*

Haa Aaní.

Íitl' Tlagáa.

Na Yuubm.

Our homelands.

HOW & WHY WE LEAD

Everything starts with our vision and core values

Working Together

Offer help when others are in need and show thankfulness when others help us

Insatiable Curiosity

Strive to understand how things really are

Live in Truth – Be Humble, Respectful and Transparent

Demonstrate honesty, trustworthiness, and ethical integrity through actions and behaviors

Create Value, Maintain Focus, Clarity and Drive

Recognize the need to constantly, learn, change, and grow



BUSINESSES DRIVEN BY VALUES WITH OCEAN HEALTH FOCUS



Leverage the uniqueness of Southeast Alaska to educate and inspire



Partner and invest in low-impact proteins and businesses



Improve the health of oceans and groundwater

Ocean Health ties our businesses to our communities. This will drive business interaction with our community efforts.

LAND MANAGEMENT

Healthy forests providing
financial, community and cultural
benefit

Environmental project
management tying to the need for
greater climate change solutions

Support community priorities

Promote collaborative land
management across the region



COMMUNITY FOCUS ON CREATING OPPORTUNITIES



Collaborative, region-wide efforts to use resources efficiently and bring funding to prioritized community projects including Sustainable Southeast Partnership, Spruce Root, SHI and Being Good Relatives (tribes and village corporations)



Investments in Southeast businesses that are growing and can provide a tie-in to workforce development and career training, including Barnacle Seafoods, low-impact tourism, aquaculture / mariculture and local fisheries



Sealaska team focused on increasing opportunities for shareholders, through youth educational success, training programs, voc-tec opportunities and career pathways



SUSTAINABLE SOUTHEAST PARTNERSHIP

A diverse network of organizations and individuals working together to reach cultural, ecological, and economic prosperity for Southeast Alaska communities

- Alaskan Youth Stewards / TRAYLS Program
- Harvesting for Elders Program
- Natural Resource and Stewardship Training
- Youth Engagement and Education
- Community prioritized projects
- Tourism and economic development support