



# Alaska LRTP/FP

## Southeast Conference Update

Alaska Moves 2050

# Presentation Outline

- Project Overview
- Key Themes
- Goals
- Policies and Actions
  
- On-Line Open House is live!



<https://storymaps.arcgis.com/stories/faf98209e31249089a38ff47bcdcd3fb>





Is our transportation system ready for the challenges of the next 25 years?

---

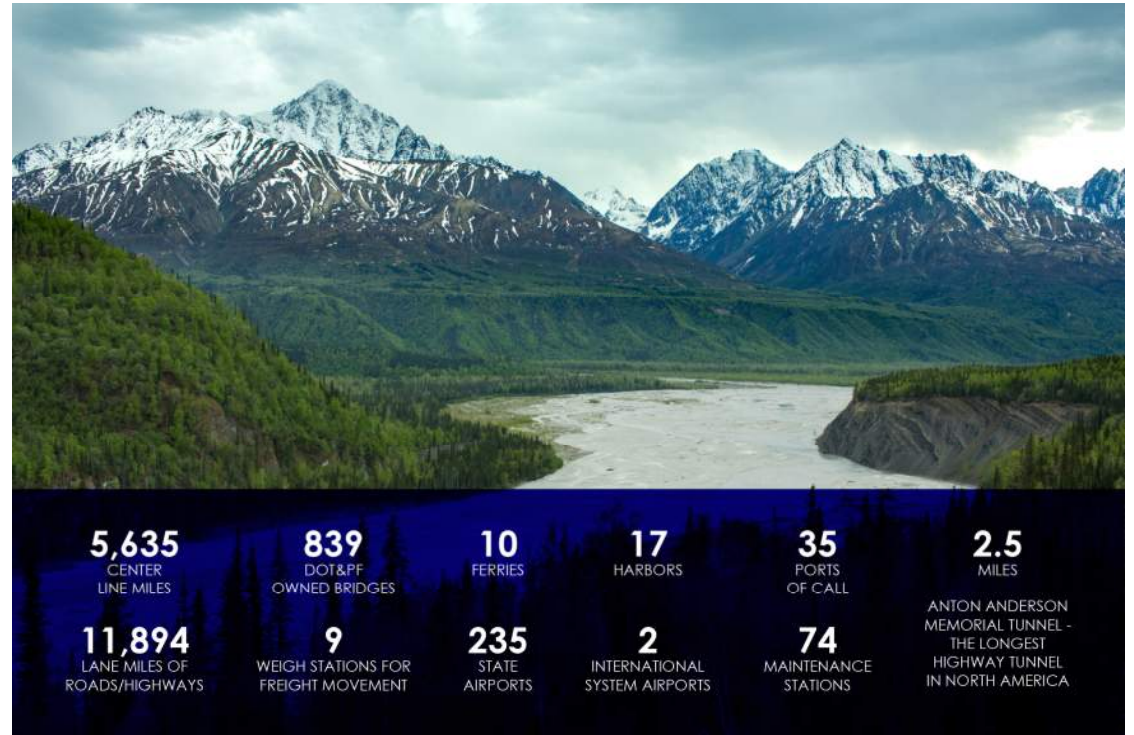


Acknowledge that what may happen to Alaska with respect to certain driving forces is unknown, but by thinking through what could happen and how best to respond to those scenarios, Alaska can be better prepared to manage risk and maximize opportunities.



# What is the LRTP and FP?

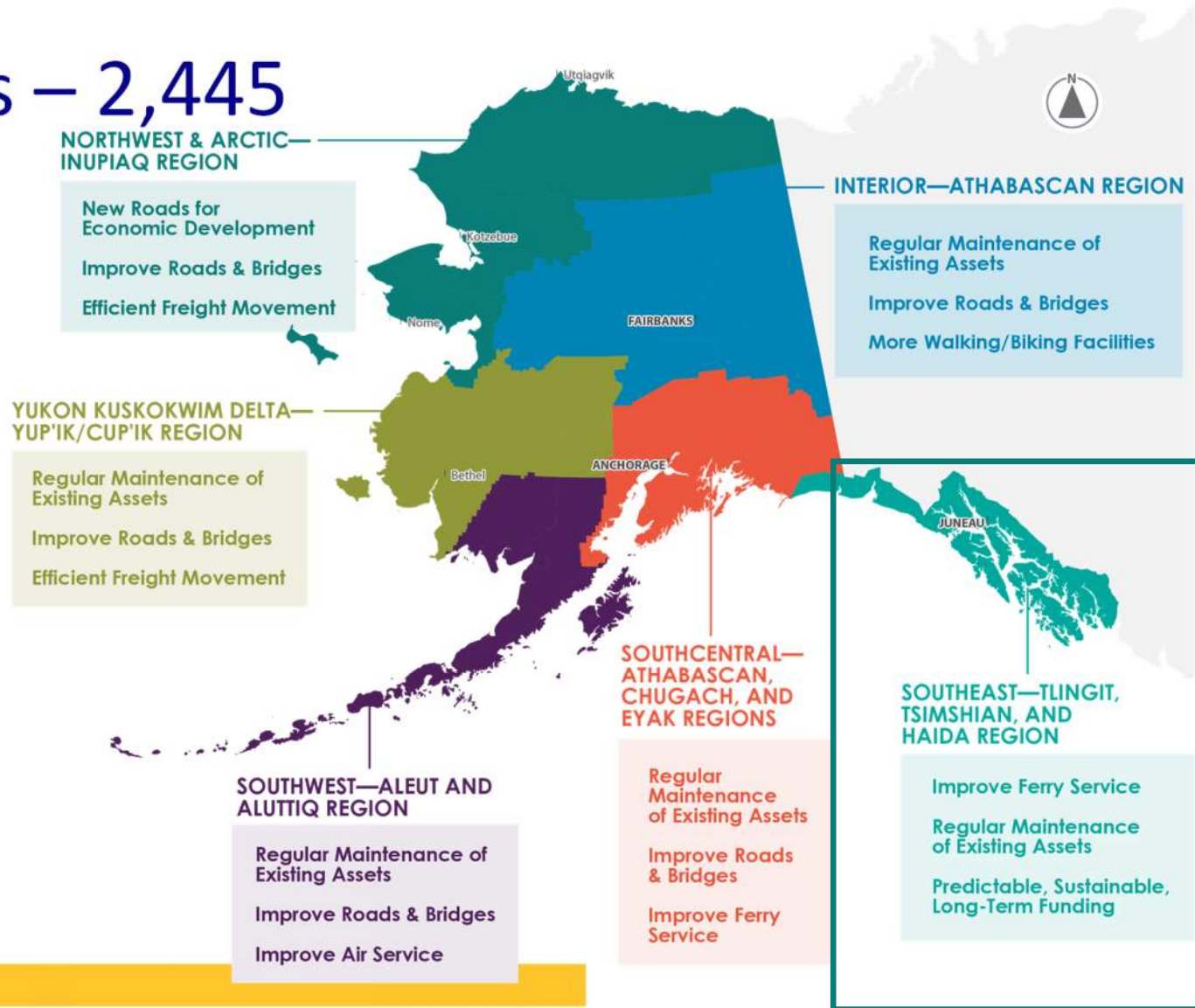
- Guides planning and policy decisions for DOT&PF-owned and -managed multimodal transportation assets for the next 25 years.
- Performance-Based



**Ultimately, this plan will present policies and actions to achieve a common vision.**

# Survey Highlights – 2,445

- Visiting family and friends
  - personal vehicle (78%)
  - plane (45%)
  - ferry (37%).
- Top priorities
  - Maintain what we have
  - Long-term funding
  - Improve ferry service
  - Improve roads and bridges
  - More options for walking and bicycling



# Goals

Safety & Mobility

Management of the System

Operation & Maintenance

Resiliency

## Safety & Mobility for All Alaskans

Enhance the quality of life for all Alaskans by strategically supporting all transportation modes to **improve accessibility, safety, personal mobility and interconnectedness** with the intent of moving people, and goods efficiently and equitably.

## Management of the System

Address prevailing transportation challenges using the best and most cost-effective modal, intermodal, or multimodal solutions to **improve operational efficiencies and safety**, with careful consideration of life cycle costs.

## Operation & Maintenance of the System

Plan for **full life cycle costs** across the transportation system, including planning, construction, operation, and maintenance to improve funding allocation in a consistent and effective manner.

## Resiliency

**Assess risk and invest in solutions** to develop a transportation system that will reduce environmental impacts and adapt to and recover from the effects of climate change, natural disasters, and other disruptions.

# Goals Continued

Coordination & Collaboration

Sustainable Funding

Performance-Based Management

Transportation Innovation

Economic Vitality

## Coordination & Collaboration

Improve the efficiency and effectiveness of transportation services by **expanding DOT&PF's coordination and collaboration** with other levels of government, industry partners, and the public.

## Sustainable Funding

Establish **stable, diverse, and long-term funding** sources for each transportation mode and explore potential public-private partnerships.

## Performance-Based Management

Invest resources to improve access to data science, analytics, and informatics to implement **data-driven, evidence-based decision-making**.

## Transportation Innovation

Identify and plan for **national trends and local innovations** that have the potential to impact the provision of transportation services, particularly as they relate to safety, efficient freight movement and work force needs.

## Economic Vitality

Monitor and consider statewide economic trends such as job creation, access to jobs, and workforce training and plan for and **invest in transportation infrastructure that facilitates economic growth** and lowers the cost of goods and services.



# Three Plausible Futures – What if...



Full  
Speed  
Ahead



Cruising



Powering  
Down

## Action-Oriented – Aligning Goals, Plausible Futures & Funding



- Money comes in different colors
  - Federal and State
- Actions and Implementation Strategies
  - Achievable and Measurable

# What's Next



- Public Survey will help refine policies and actions
- Public Review Draft Plan – Early May

**August 2022: FINAL LRTP & FP**





[alaskamoves2050.com](http://alaskamoves2050.com)

## How to Reach Us

Eric Taylor, DOT&PF Project Manager  
[eric.taylor@alaska.gov](mailto:eric.taylor@alaska.gov)  
907-465-8958

Wende Wilber, Consultant Project Manager  
Kittelson & Associates, Inc.  
[wwilber@kittelson.com](mailto:wwilber@kittelson.com)  
907-903-8461

Holly Spoth-Torres, Public Involvement Lead  
Huddle AK  
[holly@huddleak.com](mailto:holly@huddleak.com)  
907-223-0136

# Planning Team

