



WASHINGTON STATE FERRIES

Electrification Program

SE Alaska Conference
Matt Von Ruden, Program Administrator

Feb. 1, 2023

DRAFT: 1/25/23



Briefing Topics

- Feb. 1: Decision-making
 - WSF Organization
 - Planning
 - Policy decisions
 - Funding
- Feb. 2: Implementation
 - WSF System
 - Rationale for hybrid vessels
 - Implementation

Our Ferry System

Largest ferry system in the United States



21 auto-passenger ferries



10 routes serving 20 terminals



23.9 million riders in 2019



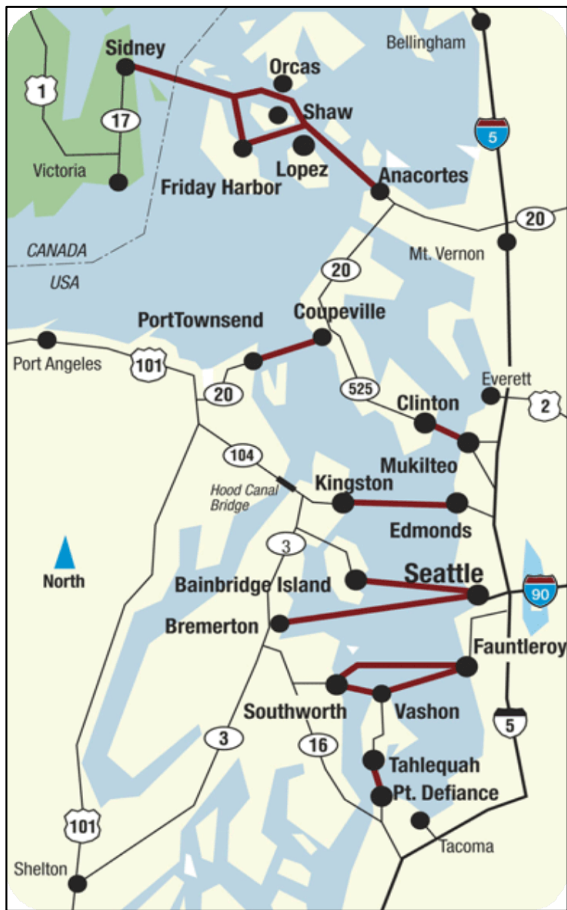
10.5 million vehicles in 2019



450 sailings per day



1,800 employees



WSF Structure

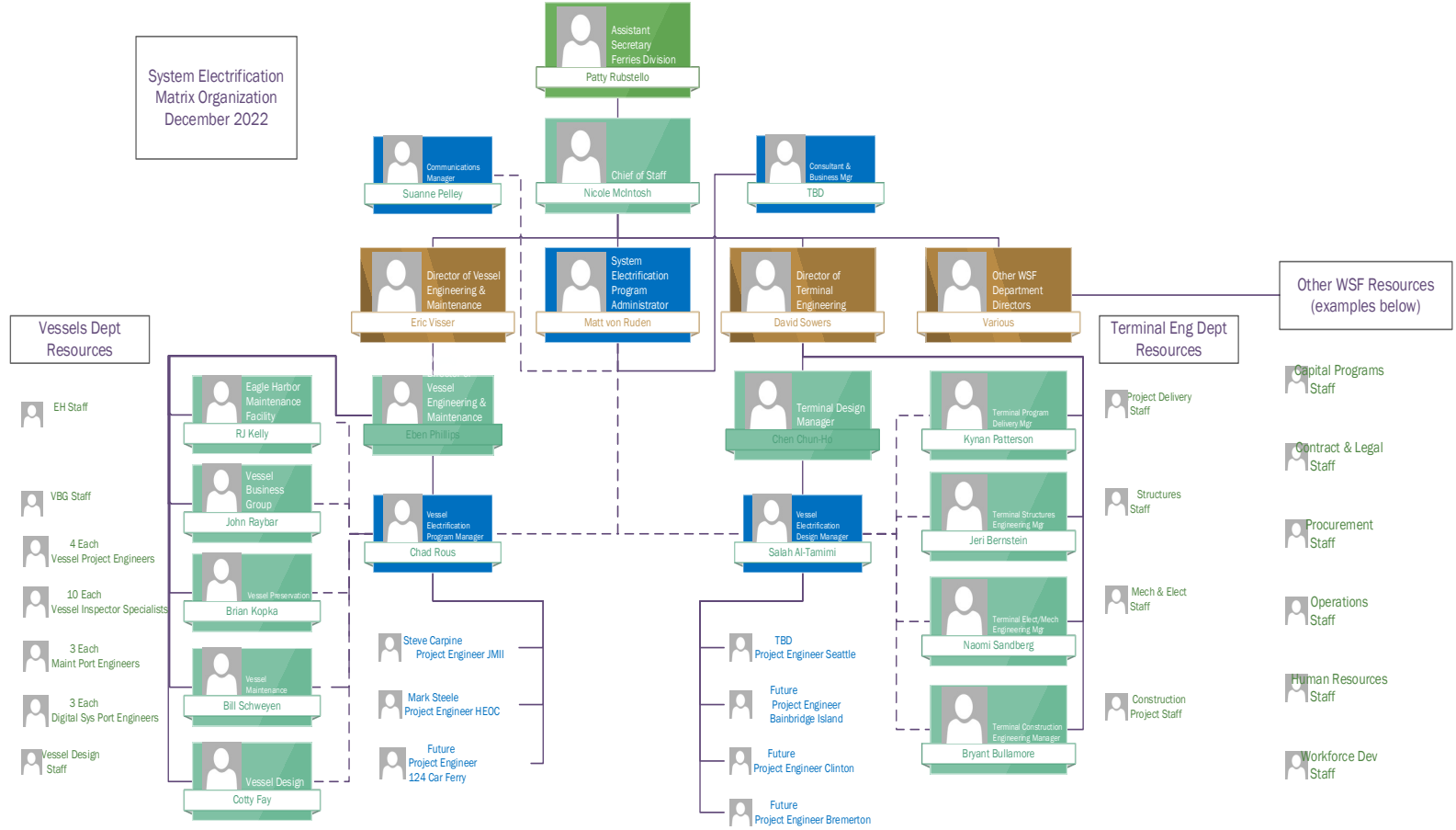
Ferries Division of WSDOT

- Patty Rubstello, Assistant Secretary
- Nicole McIntosh, Chief of Staff
- Executive Team comprised of:
 - Marine Operations (1,200 deck and terminal crew)
 - Vessel Engineering and Maintenance (400 engine crew)
 - Terminal Engineering
 - Finance and Administration
 - Planning, Customer and Govt. Relations
 - Communications
 - Safety Systems and Training
 - Human Resources
 - IT

Electrification Program

- Matt Von Ruden, Administrator
- Matrixed organization with WSF and consultant staff to address:
 - Vessel electrification
 - Conversions
 - New vessels
 - Terminal electrification
 - Program administration
 - Communications

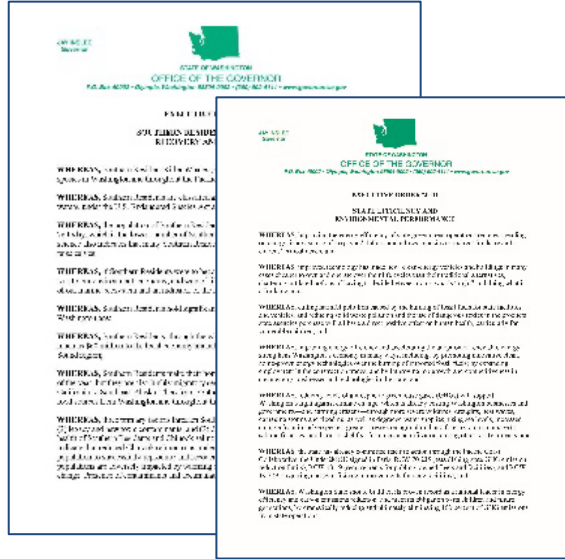
System Electrification
Matrix Organization
December 2022



Launch of WSF Electrification Program



RCW 70A.45.050 –
Greenhouse gas emission
limits for state agencies
(2020)



Governor Inslee's Executive
Orders 2018-01 and 2020-01



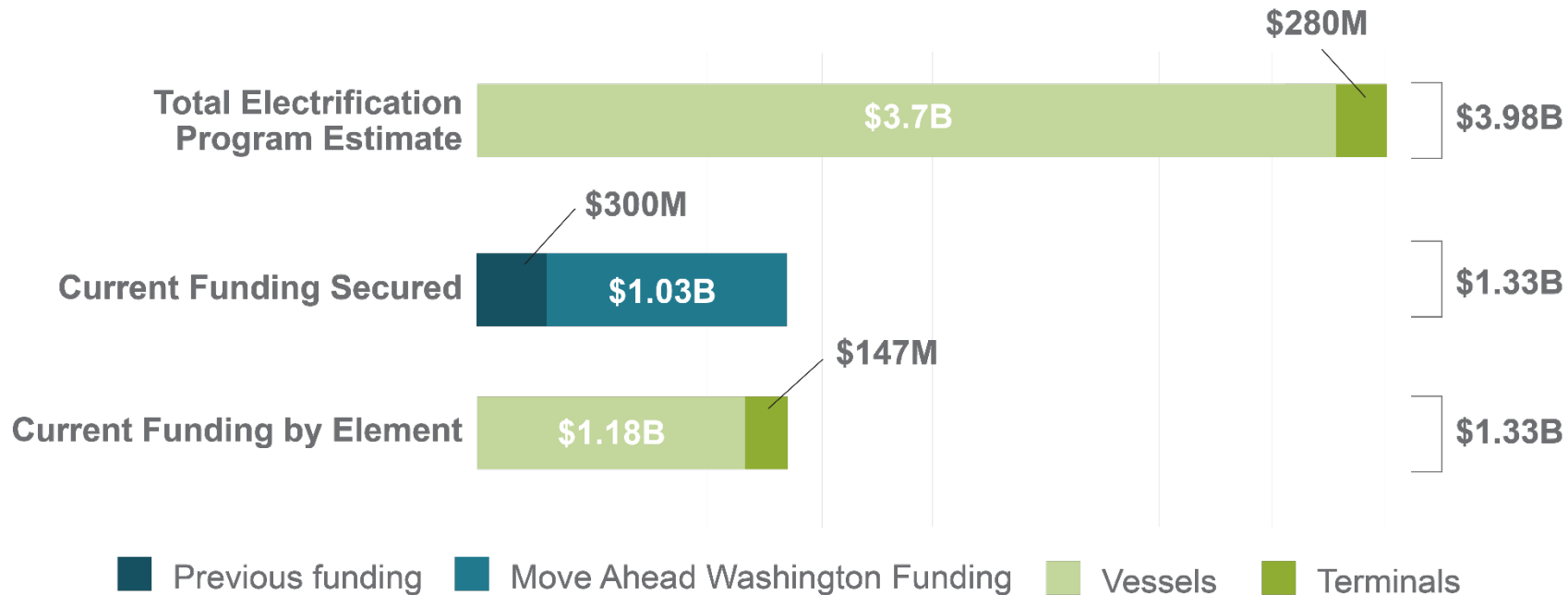
WSF Plans from
2018 – 2020

Funding

- With the passage of the 2022 Move Ahead Washington transportation package, the program received \$1.03 billion
- With \$1.33 billion secured to date, the program has funded the following elements:
 - ✓ 5 hybrid electric Olympic Class vessels
 - ✓ Up to 4 vessel conversions
 - ✓ Central Puget Sound terminal electrification



Funding



Questions?



Matt Von Ruden
Administrator, System Electrification
Program
Washington State Ferries
Matt.VonRuden@wsdot.wa.gov