



# SEARHC

SOUTHEAST ALASKA REGIONAL HEALTH CONSORTIUM

Cate Buley, MD FAAFP FACHE

Vice President-Medical Director for Primary Care Services

# Locations

## MISSION

Alaska Native People working in partnership to provide the best healthcare for our communities

## VISION

Partnering with our communities to promote a healthy balance of mind, body and spirit

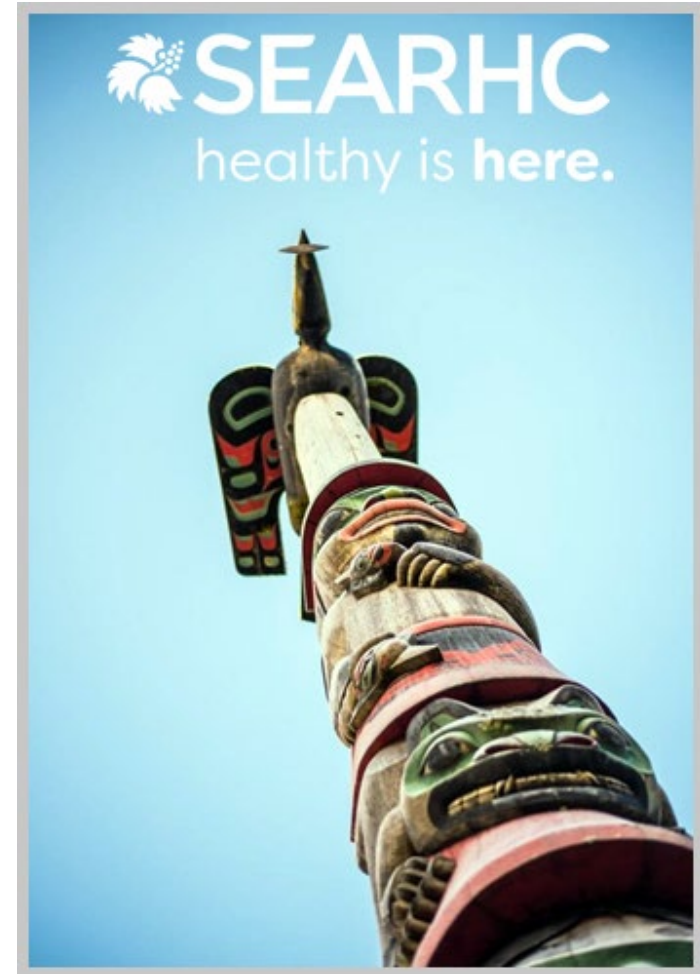
## VALUES

- Respect
- Cultural Identity
- Service
- Professionalism
- Compassion



# SEARHC History

- 1975: Congress passed the Indian Self-Determination and Education Assistance Act.  
This gave Alaska Native tribes the option of assuming the operation of health services in their communities.
- 1976: SEARHC was one of the first organizations to contract with the Indian Health Service (IHS), the federal agency responsible for ensuring that comprehensive public health services are available to American Indian and Alaska Native people.
- 1982: the contract was expanded to include the operations of the IHS Juneau clinic, now the Ethel Lund Medical Center (ELMC).
- 1986: SEARHC assumed operation of the hospital in Sitka, now Mt. Edgecumbe Medical Center (MEMC).



# The SEARHC Board

- The SEARHC Board of Directors serves as the Consortium's chief policy-making body.
- The Board is comprised of 15 individuals who oversee all SEARHC functions and programs.
- Board representatives are elected by the tribal governing body in each participating community.
- The Board is guided by the Consortium's values, vision and mission that are **inclusive** of all people living in the Southeast region.



Mt. Edgecumbe Medical Center Groundbreaking June 2022

# Executive Leadership Team



**Charles Clement**  
**President,**  
**Chief Executive Officer**



**Michael Douglas**  
**Senior Vice President,**  
**Chief Legal Officer**



**Leatha Mercurieff**  
**Senior Executive Vice President,**  
**Chief Operating Officer**



**Dan Harris**  
**Senior Vice President,**  
**Chief Financial Officer**



**Elliot J. Bruhl, MD**  
**Senior Vice President,**  
**Chief Medical Officer**



**Heidi Aylsworth**  
**Chief Strategy & Project Officer**



**Eric Gettis**  
**Senior Vice President,**  
**Chief of Behavioral Health**



**Martin Benning**  
**Senior Vice President,**  
**Chief of Clinical & Hospital Operations**

# Medical Leadership Team



***David Vastola, MD***  
***Hospital Administrator &  
Medical Director of Mt.  
Edgecumbe Medical  
Center***



***Lynn Prysunka, MD***  
***Medical Director of  
Wrangell Medical  
Center***



***Cate Buley, MD***  
***Vice President &  
Medical Director of  
Primary Care***

# SEARHC at a Glance

- SEARHC provides healthcare in **27** communities in Southeast Alaska
- SEARHC operates two hospitals:
  - **Mt. Edgecumbe Medical Center (MEMC)**, a 25-bed critical access hospital providing acute care, critical care, obstetrics, surgery, perioperative care and swing beds.
    - 19 Long-Term care beds
  - **Wrangell Medical Center (WMC)**, an 8-bed critical access hospital providing acute care and swing beds.
    - 18 long-term care beds

**1,410**

SEARHC Employees

**27**

SEARHC Communities

**140**

SEARHC Providers

## 2022 Year in Numbers

Total Clinic Visits\* – **115,000**

\*Inclusive of Primary Care, Urgent Care, Specialty Care, telehealth & other clinic visits

Behavioral Health Visits – **52,500**

Dental Visits – **41,300**

Physical Rehabilitation Encounters – **28,000**

Optometry Visits – **6,700**

Inpatient Admissions – **835**

Observation Days – **1,600**

ER Visits – **6,000**

Surgical Procedures – **1,900**

Swing Bed Admissions – **140**

Long-Term Care Days – **10,000**

Inpatient Admissions – **835**

Births – **77**

Laboratory Tests – **622,000**

Prescriptions Filled – **276,000**

Radiology Images – **23,800**

# SEARHC Hospitals



## Mt. Edgecumbe Medical Center, Sitka

Population: 8,689  
458 employees



## Wrangell Medical Center

Population: 2,521  
80 employees



# SEARHC Regional Clinics



**Ethel Lund Medical Center, Juneau**

Population: 32,094

207 employees

**Haines Health Center**

Population: 2,526

49 employees



**Alicia Roberts Medical Center, Klawock**

Prince of Wales Population: 5,000

47 employees



# SEARHC View 2024

## *Employer and Provider of Choice*

SEARHC will attract and retain the best employees and providers. SEARHC believes that a strong and engaged workforce will better enable the organization to deliver consistent, high-quality care and service to its communities.

## *Intentional and Strategic Growth*

SEARHC will thoughtfully evaluate and plan for new growth opportunities, ensuring strategic alignment.

## *Seamless Healthcare Delivery*

SEARHC will partner with its providers, communities and other organizations in enhancing the system of care for our patients to best support positive health outcomes.

## *How Do We Execute Our Strategic Plan?*

- 66% of our total is from payers: Medicare/Medicaid/Commercial.
- 15% of our total revenue is from IHS.
- 4% of our total revenue is from grants.

# Employer/ Provider of Choice

**Goal 1** - Employer of Choice

**Goal 2** - Provider of Choice

**Goal 3** - SEARHC Awareness

- Dental Assistant Training Program
- Medical Assistant Training Program (CCMA)
- Nursing Assistant Training Program (CNA)
- Medical/Dental Residency Rotations-1 month internship opportunities
- Community Health Aide Program (CHAP)

Instagram

Home

Search

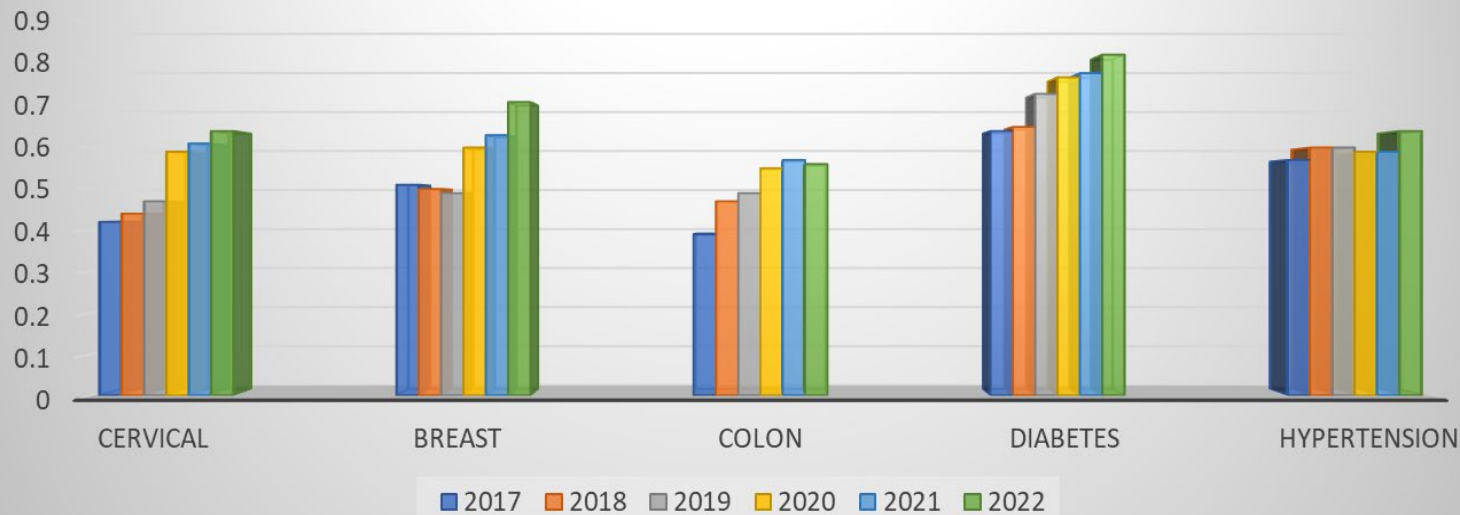
Explore

Reels

Messages

Notifications

**SEARHC Quality Measures 2017-2022**

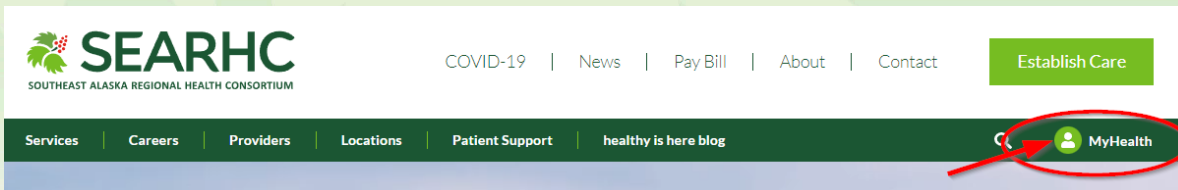


# SEARHC Outreach to Patients

- HealtLife Patient Portal App on your phone:



- My Health on our website:



- Now you can track your BP, weight, labs, meds from your clinic visits/Cerner in the Apple Health App if you are an active user of the patient portal.
- This will allow patients to be part of the medical home team working to improve their health outcomes and stay on top of their numbers.
- After your clinic visit, you can go to the Apple Health App and view your data from your EHR records.

# Intentional and Strategic Growth

**Goal 1** - Juneau expansion

**Goal 2** - Complete construction of new hospital in Sitka

**Goal 3** - Continue to build on current strategic partnerships

**Goal 4** - Evaluate other strategic growth opportunities



## Vintage Park Medical Office Building, Juneau

Estimated Occupancy – February 2024

Primary Care

Urgent Care – including x-ray and lab

Pediatrics

Behavioral Health

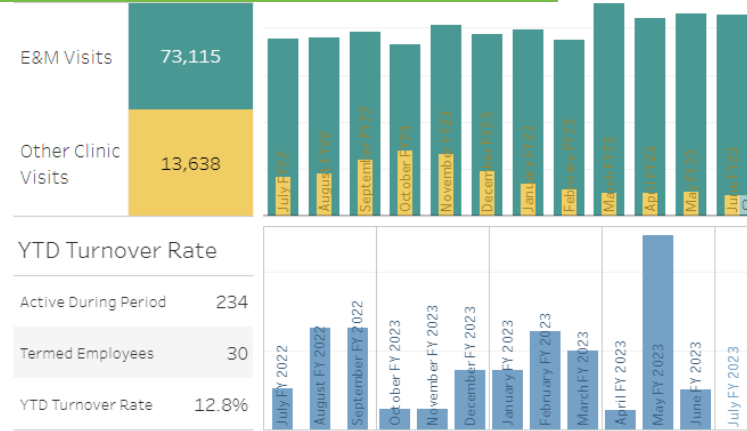
Optometry

## New Mt. Edgecumbe Medical Center

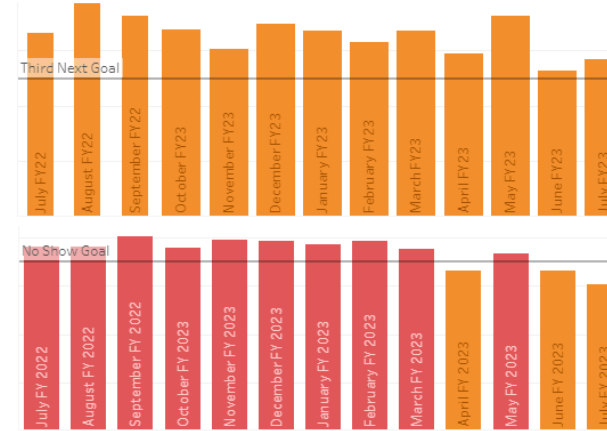
Estimated Occupancy Fall 2025



# SEARHC is a Data Driven Healthcare Organization: Operations/Patient Experience/Quality on One Dashboard



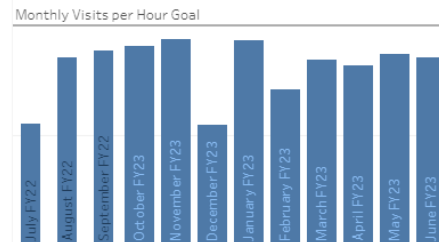
YTD Third Next  
**6.6**



## Throughput - Lawson Hours

YTD Throughput  
Lawson Payroll Hours

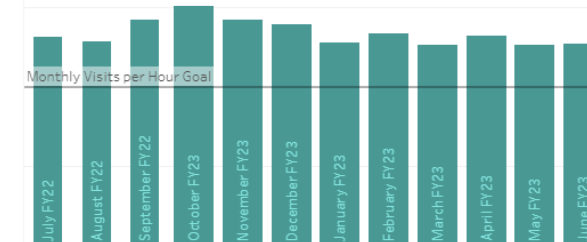
**0.80**



## Throughput - Clinical Half Day Hours

YTD Throughput  
Clinical Half Days

**1.34**



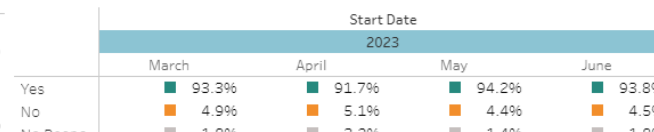
## Patient Experience

Would you recommend us to your family and friends?

YTD Patient Experience

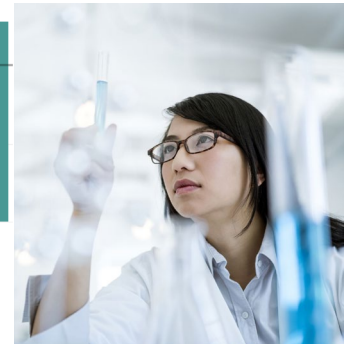


Trended



## 2023 Quality Measures

Measure	Target	Current
BP Control	60%	64.73%
Foot Exam	50%	35.99%
Hep C Screening	25%	49.47%



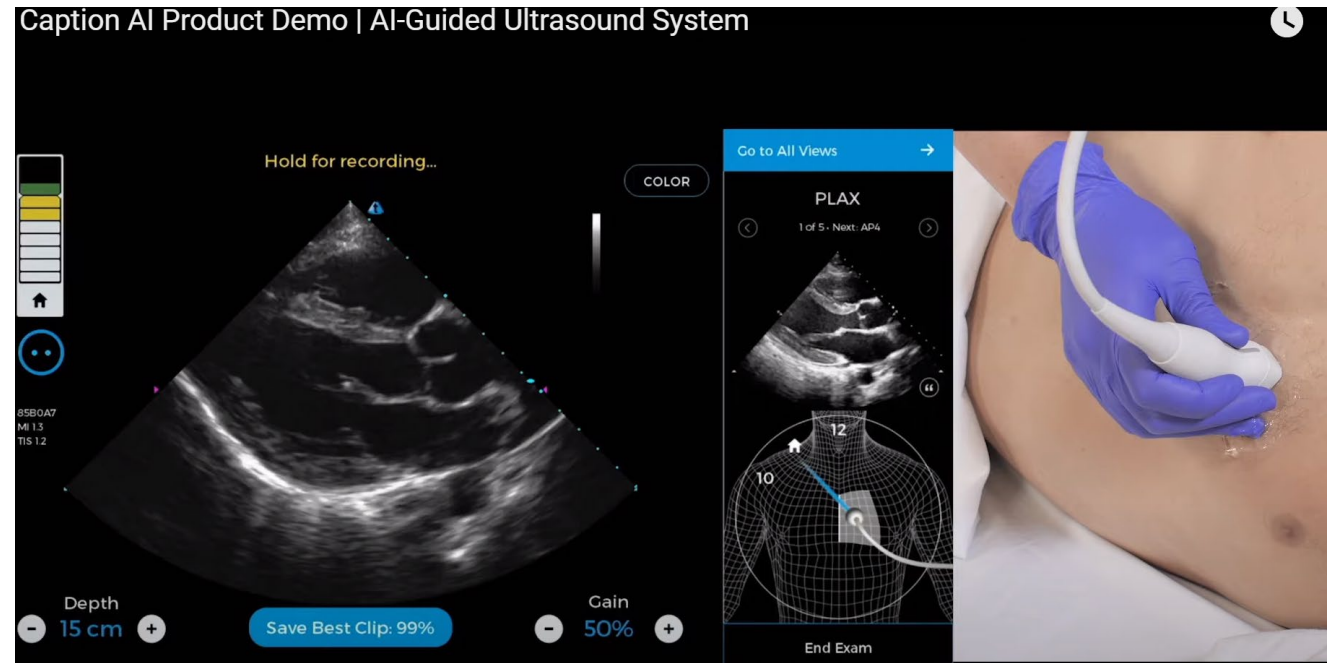
# Seamless Healthcare Delivery

**Goal 1** - Continue to expand Specialty Services at SEARHC

**Goal 2** - Complete Primary Care redesign

**Goal 3** - Complete Behavioral Health redesign

**Goal 4** - Identify ways to continue to utilize technology to enhance our care delivery model and patient experience



# Specialty Care & Partnerships

## SEARHC | Employed Specialists

- Orthopedics
- Ear, Nose and Throat
- General Surgery
- Obstetrics and Gynecology
- Interventional Pain
- Audiology

## SEARHC | Strategic Partnerships



- Neurology
- Rheumatology
- Cardiology
- ENT
- Dermatology
- Surgical Podiatry
- Sleep



- Cardiology
- Hepatology
- Ophthalmology
- Orthopedics
- Podiatry
- Rheumatology
- Urology
- Neurology
- Dermatology



- Endocrinology
- Neurology
- Cardiology





<https://searhc.org/>

Thank you