

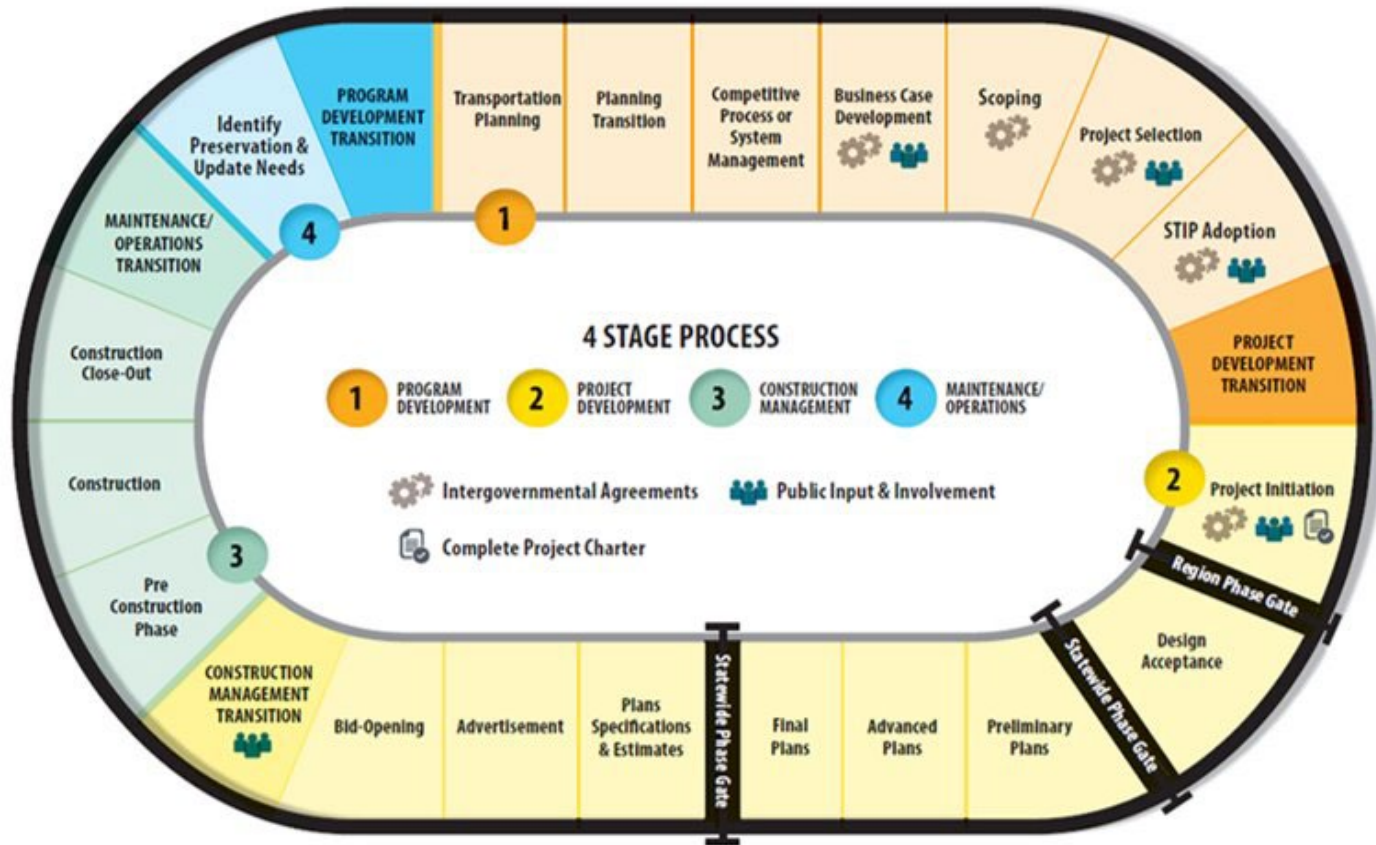


**Alaska Department of
Transportation & Public Facilities**
Southeast Conference Transportation Updates
**Planning for the Future,
Planning for Change**

James Marks, MBA
Director of Project Delivery
Thursday, February 8, 2024

Our mission is to *Keep Alaska Moving* through service and infrastructure.

Division of Project Delivery



Bridging the gap between disciplines, bringing together...

- Planning, Environmental & ROW
- Materials, Specifications, Design & Construction

Standardize and Support Department People, Processes and Tools

Advancing Project Delivery by Integrating Entire Project Lifecycle – "No more siloes!"

Project Management Office

Centralizing Project Delivery Methods

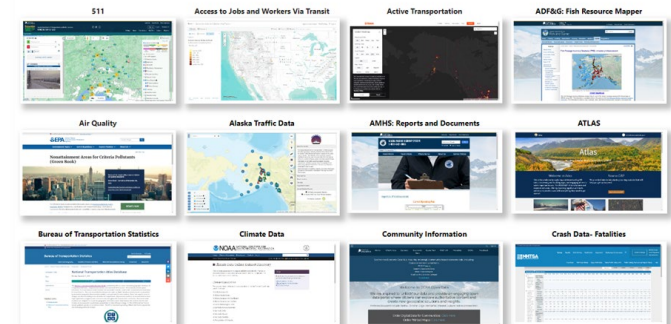
- Resource for Department and State
- Standardizing best practices

Modernizing Project Management

- **People** – Are we structured the right way? Do we have the right resources? Who needs to be on the team?
- **Processes** – Are we using the best method for the project in hand? Are there more modern/agile ways to approach management and delivery?
- **Tools** – Are we maximizing our current tools? What else do we need? What are our gaps?



Alaska DOT&PF Data Catalog - Page 1



Project Delivery Center of Excellence

Accelerating Infrastructure; Advancing...

- On Time, On Task, On Budget
- De-risking project delivery

Streamlining Project Delivery Processes

- Transportation infrastructure similar to assembly line
- Systematic progression of tasks
- Each phase akin to a station on the line where specialized work is sequentially added to achieve the final product
- Proactively Analyzing, Identifying and Addressing causes for project diversions/changes



Planning Last Year, Lessons Learned

Long Range Transportation Plan

- ❑ 2020-Current saw unprecedented changes
 - IIJA and many new funding opportunities
 - Pandemic & Remote workforce expansion
 - Increased frequency of natural disasters
 - Rapid growth of technology, drones, electric vehicles
- ❑ Re-evaluation of existing conditions, priorities

Interior Alaska Transportation Plan

- ❑ New approach to Area Plans
- ❑ Standardizing format, syntax, and data
- ❑ Including projects of significance



Planning in 2024 and Beyond

FAMILY OF PLANS

Range Transportation Plan

Multimodal Statewide Plan

POLICIES, GOALS, & OBJECTIVES

1. Strategic Investment Plan

2. Southeast Alaska Transportation Plan

3. Prince William Sound Transportation Plan

4. Equity Plan

5. Resiliency Plan

6. Waterways Plan

7. Strategic Corridors Master Plan

8. Statewide Transit Plan

9. Waysides Plan & Truck Parking Study

Strategic Investment Plan

From LRTP: (1) Goals, Policies & Actions; (2) Regional Priorities; (3) Modal Opportunities

FUNDING DISTRIBUTION & INVESTMENT LEVELS

System Plans

Plans

Objectives

& Opportunities

Plans:

Funding Distribution

Constraint

Objectives & Criteria

TIER IV

Regional, Area, & Corridor Plans

From LRTP:

- Goals & Objectives

From Modal & System Plans:

- Modal Requirements
- Level of Service

From Strategic Plans:

- Funding Distribution
- Fiscal Constraint

REGIONAL PRIORITIES, STRATEGIES, ACTIONS, & PROJECTS!



**Questions?
Thank you.**

JAMES MARKS, MBA
Director, Project Delivery
W: (907)465-6985 | E: JAMES.MARKS@ALASKA.GOV





Alaska Department of Transportation & Public Facilities

Southeast Conference Transportation Updates

Marie Heidemann
Planning Chief, Juneau Field Office

February 8, 2024

Juneau Field Office Planning Team

- **Marie Heidemann**
 - Planning Chief
- **Paul Khera**
 - Aviation Planner
- **Alex Lawrence**
 - Surface Planner
- **Sarah Cripe**
 - Area Planner (SW)
- **Vacant**
 - Area Planner (SE)

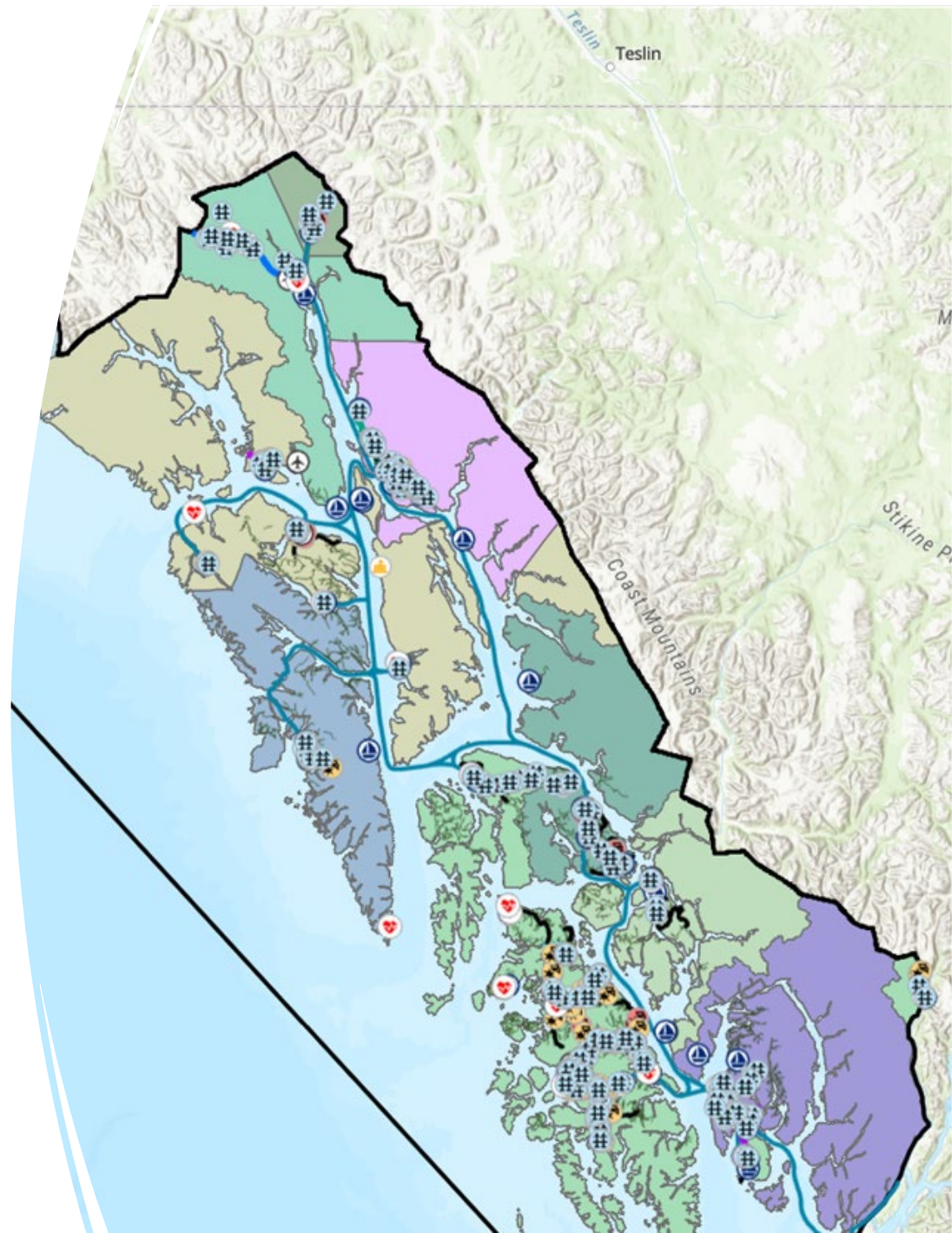


A person in a blue long-sleeved shirt and black shorts is running on a dirt path. The background is a light blue sky with a faint map of Alaska. A dark blue horizontal band across the middle of the image contains the text "Long Range Planning" in white. The person's legs and feet are visible in the lower half of the image, suggesting they are running towards the viewer.

Long Range Planning

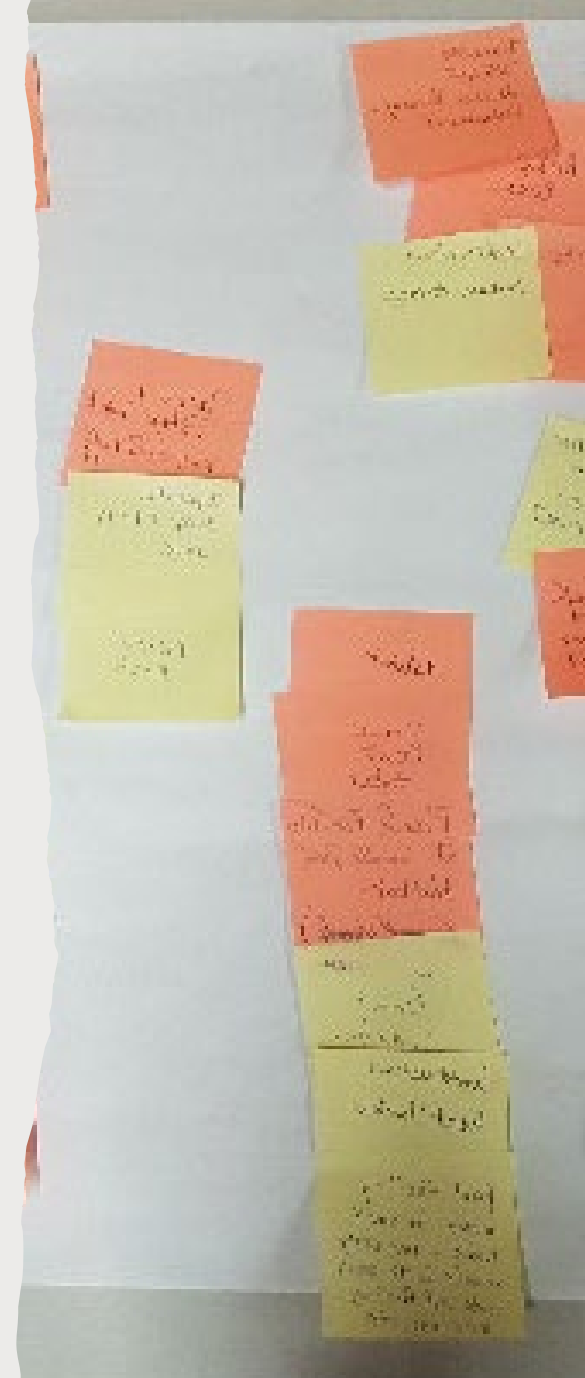
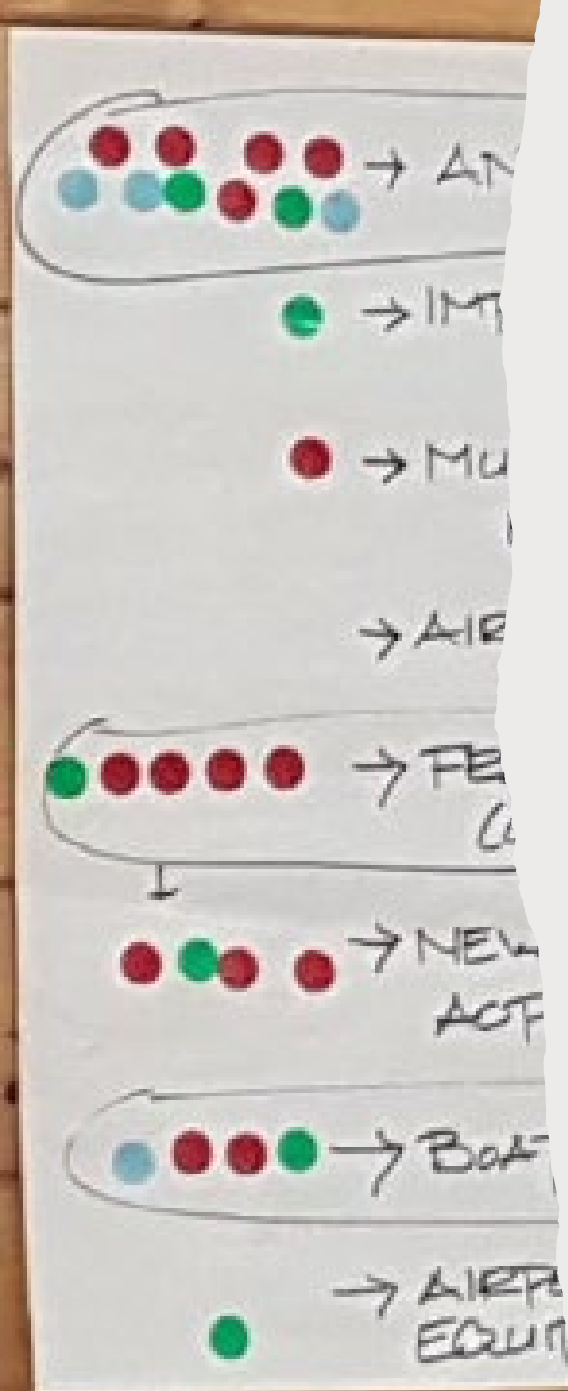
Existing Conditions Update

- Planning Context
- Regional Context
- Community (Borough and Census Area) and Native Tribe Profiles
- Will inform upcoming planning efforts to include public engagement, gaps analysis, and recommendations



Community Transportation Workshops

- Multi-agency effort
- Inform SE Transportation Plan, USFS Transportation Plan, and other planning efforts.
- Identify community priority projects
- Align partnerships and project funding opportunities





Nomination Programs



CTP & TAP Update

- The Project Evaluation Board (PEB) met on Wednesday, December 20, 2023 in Anchorage.
- Ranked 46 Projects
- Consent Agenda:
 - Agreed-upon scores from pre-scoring were considered as consensus, PEB's evaluation discussion focused on the scoring variances



Field Office Planner Review and Scoring

Preliminary Scores



Planning Chiefs and Strategic Investment Section Review

Scoring Feedback
and Consistency
Review
Pre-Scores



Project Evaluation Board Member Review and Scoring

Individual PEB
Member Scores

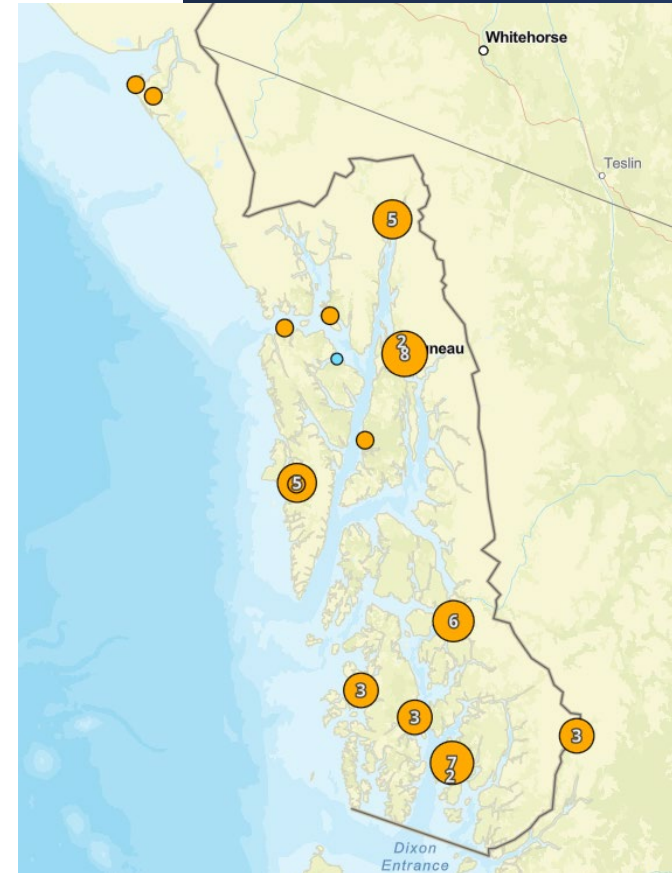


Project Evaluation Board Meeting

Final Scores

CTP & TAP UPDATE

- **Statewide**
 - 25 Advanced to CTP PEB
 - 21 Advanced to TAP PEB
- **Southcoast**
 - 11 Advanced to CTP PEB (28 Scored)
 - 8 Advanced to TAP PEB (15 Scored)
- **Southeast**
 - 5 Advanced to CTP PEB (16 Scored)
 - 7 Advanced to TAP PEB (12 Scored)



★ = Southeast Projects

Community Transportation Program
 Program Evaluation Board Scores
 December 20, 2023

Project Name	Project Sponsor	STBG Population Category	Urban/Remote	PEB Score
Bogard Road Rehabilitation: Greentree Street to Earl Drive	DOT&PF Central Region	50K-200K	Urban	381.8
Wales to Tin City Road Reconstruction	City of Wales via Kawerak Inc.	<5K (Rural)	Remote	371
Seldon Road Reconstruction, Wasilla Fishhook Road to Snowgoose Drive	Matanuska Susitna Borough	50K-200K	Urban	369.3
Seldon Road Reconstruction, Snowgoose Drive to Lucille St.	Matanuska Susitna Borough	50K-200K	Urban	367.3
Bogard Road Rehabilitation: Engstrom to Greentree Street	Alaska DOT&PF - Central Region	50K-200K	Urban	361.5
★ Vintage Boulevard and Clinton Drive Reconstruction	City and Borough of Juneau	5k-49,999	Urban	344
Akutan Harbor Access road	Akutan	<5K (Rural)	Remote	338.8
Wales Community Roads Improvement	City of Wales via Kawerak Inc.	<5K (Rural)	Remote	338
Eielson AFB Old Rich Highway Improvements and Roundabout	Eielson Air Force Base	<5K (Rural)	Urban	335.3
★ Juneau Glacier Highway Improvements: Access Road to Egan	Alaska DOT&PF - Southcoast Region	5k-49,999	Urban	334
★ Unalaska Captain's Bay Road	City of Unalaska	<5K (Rural)	Urban	334
★ Kasaan to Goose Creek Access road - MP 0.0 to 5.4	Organized Village of Kasaan	<5K (Rural)	Remote	332.5
★ Katlian Avenue Paving and Improvements	City and Borough of Sitka	5k-49,999	Urban	326.7
Little Diomed Community Boardwalk Improvements	City of Diomed via Kawerak Inc.	<5K (Rural)	Remote	326
Otto Lake Road Resurfacing and Widening	Denali Borough	<5K (Rural)	Urban	317.3
★ Forest Park Service Area Road & Sewer Improvements	Ketchikan	5k-49,999	Urban	317.3
Shaktoolik Community Roads Improvement	City of Shaktoolik via Kawerak Inc.	<5K (Rural)	Remote	314.3
Mission Road Rehabilitation	City of Kodiak	5k-49,999	Urban	311
Main Street Rehabilitation	Homer	<5K (Rural)	Urban	296.5
Sand Point Humbolt Slough Bridge Rehabilitation	City of Sand Point	<5K (Rural)	Remote	275
Iliamna Areawide Roads Resurface	Alaska DOT&PF - Southcoast Region	<5K (Rural)	Remote	271
West Lagoon Road Reconstruction	City of King Cove	<5K (Rural)	Remote	271
Johnson Road Improvements	Alaska DOT&PF - Northern Region	<5K (Rural)	Urban	269
Donut Hole Road	City of Bethel	5k-49,999	Urban	260.7
Homestead Lane Extension	Soldotna	5k-49,999	Urban	204.2

This ranking order represents the final PEB scores, but does not guarantee funding. Awards will be announced when funding availability and population category sub-allocations are determined.

★ = Southeast Projects

**Transportation Alternatives Program
Program Evaluation Board Scores
December 20, 2023**

Project Name	Project Sponsor	Population Category	PEB Score
Portage Curve Multi-Modal and Trail of Blue Ice Connector	US Forest Service	<5K (Rural)	439
Naknek to King Salmon Non-motorized Pathway	Naknek	<5K (Rural)	437.5
Palmer Fishhook Separated Pathway: Trunk Road to Edgerton Parks Road	Matanuska Susitna Borough	5k-49,999	414.8
Healy to Antler Ridge Separated Path	Denali Borough	<5K (Rural)	410.5
Healy Area and School Pedestrian Path	Denali Borough	<5K (Rural)	388.5
Knik River Wayside Gold Star Families Memorial	Alaska Dept. of Fish & Game	<5K (Rural)	387.7
★ Craig-Klawock Bike and Pedestrian Path Stage 1	Craig	<5K (Rural)	381
★ Spruce Mill Promenade	City of Ketchikan	5k-49,999	363
Homer All-Ages and Abilities Pedestrian Pathway (HAPP)	Homer	<5K (Rural)	362.7
Inner/Outer Springer Loop Separated Pathway	Matanuska Susitna Borough	50K-200K	358.5
★ Hoonah - City Streets Sidewalk Construction	City of Hoonah	<5K (Rural)	345
Hartney Bay/Eyak Native Corporation Recreation Site Improvement Project	Cordova Historical Society	<5K (Rural)	344.8
★ Montana Creek Bridge Replacement	City and Borough of Juneau	5k-49,999	340
Pinky's Park Trail	City of Bethel	5k-49,999	326.7
★ Seven Pastures Pedestrian Path Improvements	Municipality of Skagway	<5K (Rural)	326.5
Palmer Fishhook Separated Pathway: Glenn Highway to Trunk Road	Alaska DOT&PF - Central Region	5k-49,999	325.7
Moose Pass Bike Path Connections	Moose Pass	<5K (Rural)	325.5
★ Forest Park Drive Walkway	Ketchikan Gateway Borough	5k-49,999	322
Egan Drive/Valdez Sign Turnout	City of Valdez	<5K (Rural)	321.3
★ Lemon Creek Multi-Modal Path	City and Borough of Juneau	5k-49,999	319.8
Seldon Road Separated Pathway	Alaska DOT&PF - Central Region	50K-200K	303

This ranking order represents the final PEB scores, but does not guarantee funding. Awards will be announced when funding availability and population category sub-allocations are determined.

Airport Project Evaluation Board (APEB)

Recent Southeast New Projects

- Gustavus Airport Gate Upgrades
- Sitka Lighting and Rotating Beacon

Upcoming Southeast Nominations

- Klawock Repaving and Lighting
- Petersburg Airport Rehabilitation
- Sitka Runway Seawall Improvement

Municipal Harbor Grants Program

SFY24 Harbor Grant Awards

- City of Wrangell Meyer's Chuck
- City of Whittier Boat Harbor
- City and Borough of Sitka
Fisherman's Float (Partial Award)

SFY25 Pending Nominations

- City and Borough of Juneau Aurora
Harbor Phase 4

Discretionary Grants

Recent Southeast Grant Awards

- Fish Passage
 - Kulixelcan River Culvert Project, Yakutat
 - High Priority Fish Passage Restoration at Threemile Creek, Klawock
 - Metlakatla Indian Community Watershed-Scale Fish Passage
- Tribal High Priority Projects
 - Craig-Klawock Path High Priority Projects, Craig Tribal Association
- Port Infrastructure Development Program (PIDP)
 - Yakutat Small Boat Harbor
 - Deep Water Port Development, Wrangell
 - Metlakatla Port Improvements Project
- RAISE
 - Kake Access Road Improvements (Design)
 - Juneau Douglas North Crossing (Design)

Pending Southeast Grant Nominations

- SE Alaska Priority Culvert and Design

Upcoming Southeast Grant Nominations

- Egan-Yandukin Intersection Improvements and Glacier Highway Connection
- Water St. and Tongass Viaducts
- North Douglas Fish Passage
- Threemile Creek, Klawock (gap funding)



**Questions?
Thank you.**

Marie Heidemann

Planning Chief

W. (907)465-4477

MARIE.HEIDEMANN@ALASKA.GOV





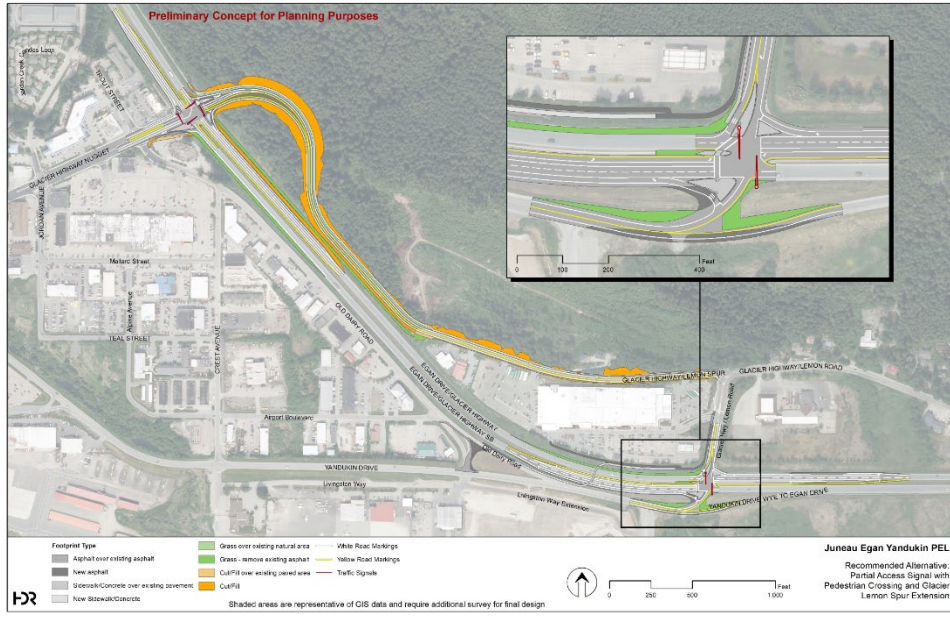
Alaska Department of Transportation & Public Facilities

Southeast Conference Transportation Updates

Christopher Goins, Director
Southcoast Region

February 8, 2024

Figure ES-1. Recommended Alternative: Partial Access Signal with Pedestrian Crossing and Glacier Lemon Spur Extension



Egan-Yandukin Intersection Improvements and Glacier Highway Connection

- In response to STIP comments - Final STIP Draft includes E-Y Partial Signalization
- Pursuing RAISE grant for remaining funding need
- **You can help! – Letters of Support** or supporting justification/data points for the grant application

Egan Yandukin Intersection Improvements

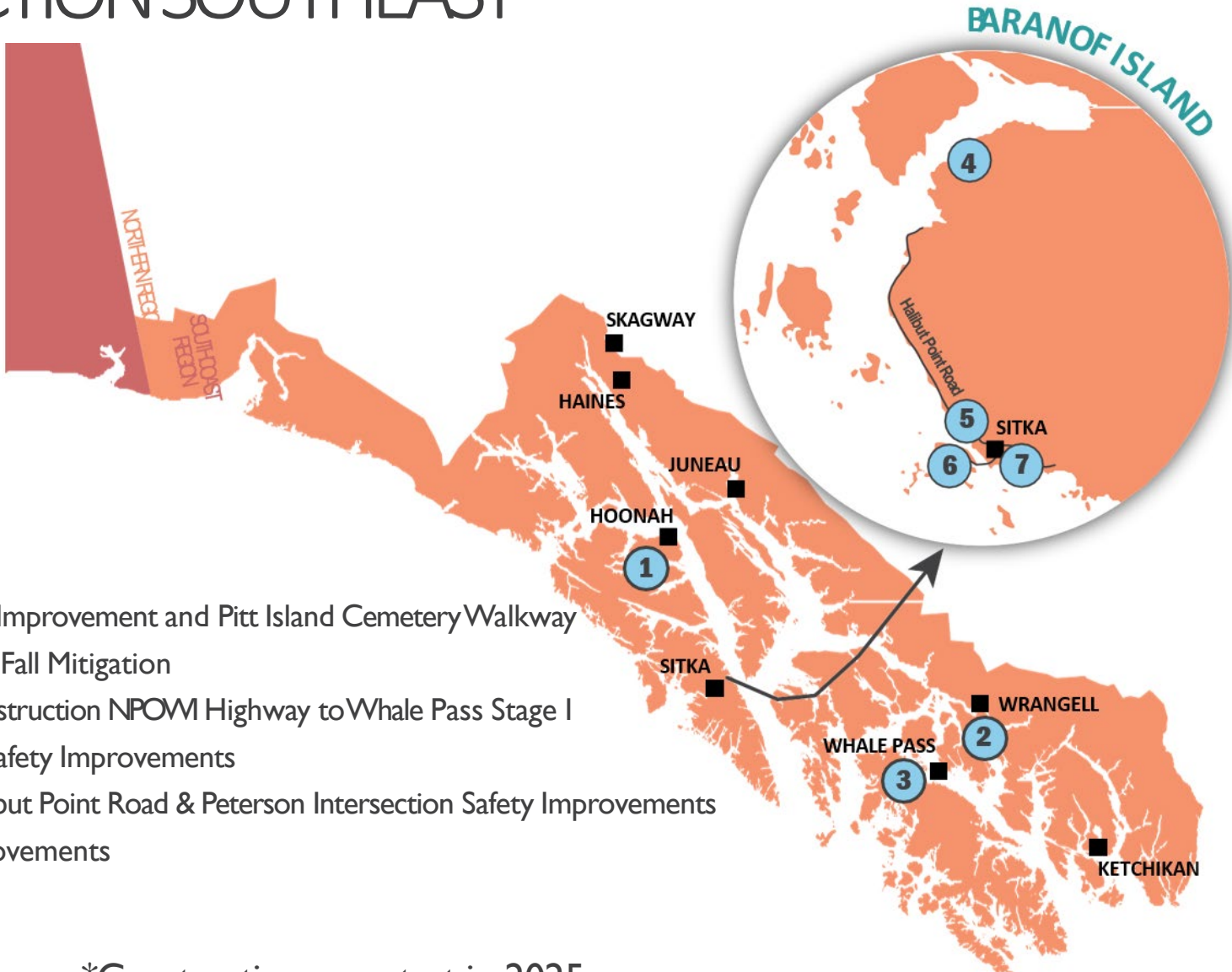
Project Costs	2024	2025	2026	2027	2024-2027	STIP ID #
	\$1,000,000	\$7,537,500	\$0	\$0	\$8,537,500	10765
Fund Source	NHPP - National Highway Performance Program					

Install a partial signalized access intersection and at-grade protected pedestrian crossing at the Egan/Yandukin intersection based on the Intersection PEL Study.



SOUTHCOAST REGION | 2024

CONSTRUCTION SOUTHEAST



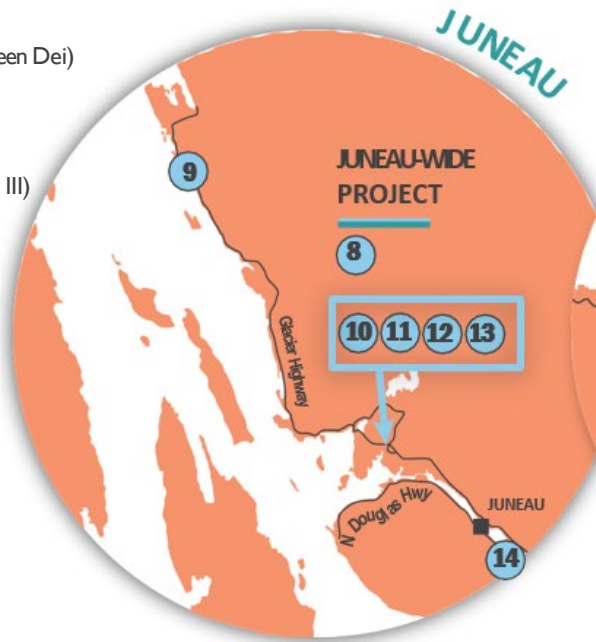
- 1| HarborWay Pedestrian Improvement and Pitt Island Cemetery Walkway
- 2| Zimovia Highway Rock Fall Mitigation
- 3| Neck Lake Road Reconstruction NPOWI Highway to Whale Pass Stage I
- 4| Peterson Intersection Safety Improvements
- 5| Katlian Bay Road | Halibut Point Road & Peterson Intersection Safety Improvements
- 6| Terminal Building Improvements
- 7| Pedestrian Seawalk*

*Construction may start in 2025

SOUTHCOAST REGION | 2024

CONSTRUCTION SOUTHEAST

- 8 | Roadways & Culverts (Emergency Repairs)
- 9 | Bridget Cove Creek Culvert Replacement
- 10 | Brotherhood Bridge Trail Improvements (Kaxdigoowu Heen Dei)
- 11 | Egan Yandukin Intersection Improvements (Stage I)
- 12 | Glacier Highway Chip Seal - Industrial to Roundabout
- 13 | Waydelich Creek Retaining Wall
- 14 | Douglas Highway Resurface and Sidewalk Repairs (Stage III)



- 15 | Terminal Building Improvements
- 16 | Wolfe Point Rock Slope Stabilization*
- 17 | Gravina Revilla Existing Berths
- 18 | North Tongass Highway Resurfacing: Airport Ferry Terminal to Ward Creek Bridge Stage I*
- 19 | Tongass Avenue Improvements
- 20 | Sayles/Gorge Bridge Replacement
- 21 | Water Street Bridge Strengthening
- 22 | Stedman & Deermount Intersection and Safety Improvements
- 23 | Haines Highway Reconstruction Milepost 20.0-25.3 (Stage III)
- 24 | Haines Highway Milepost 12.2-20 (Stage II)
- 25 | Anadromous Culverts (Emergency Repairs)
- 26 | State Street Pavement Rehabilitation



*Construction may start in 2025



State Street Pavement Rehabilitation

Construction: 2024-2025

Estimated project cost: Approximately \$20M

Scope: Resurface State Street in Skagway, replace drainage, replace curb and gutter, and upgrade curb ramps

Potential Challenges: Historically significant area, potential ground contamination within project limits, and high seasonal traffic



**Questions?
Thank you.**

Christopher Goins
Southcoast Region Director
(907) 465-1762

CHRISTOPHER.GOINS@ALASKA.GOV

