



Alaska Department of Transportation & Public Facilities

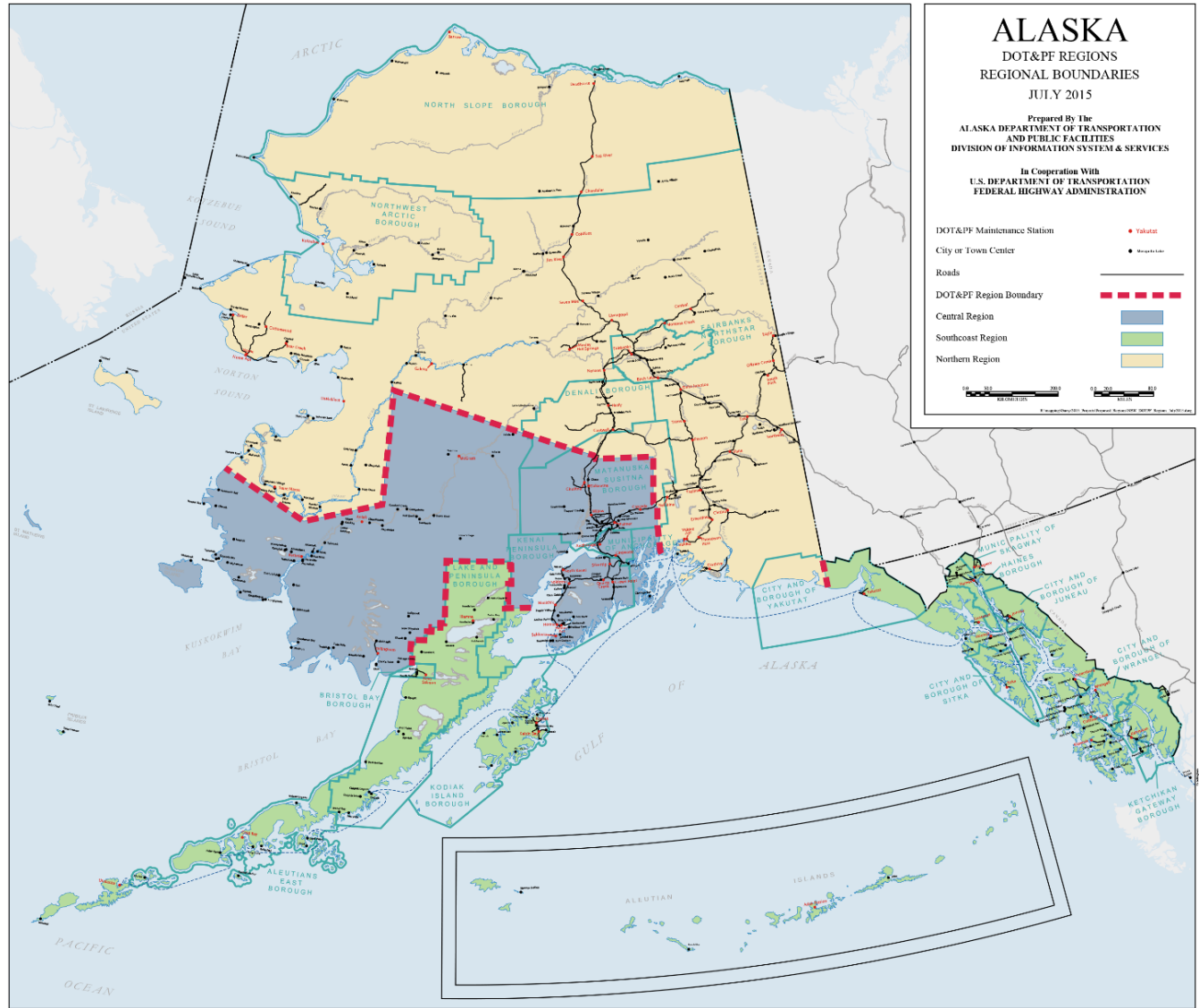
Southcoast Region Overview

Southeast Conference Mid-Season Summit

Christopher Goins, P.E., Southcoast Region Director

February 7, 2024

Southcoast Region Overview



SOUTHCOAST REGION STATS

Road Lane Miles	1,859.5
Maint. Stations	20
Maintained Airports	45
Seaplane Bases	17
Bridges	286
Harbors	16
Communities	86
Boroughs	12
City Governments	51
Tribes	60



Southcoast Region Improvement Initiatives

- Building Trust, Teams, and Partnerships
 - Find a Way to Yes
- Refining Process Mapping & Procedures
 - Improving coordination
 - Limiting multiple work efforts
- Defining Deliverable Expectations
- New Proactive Public Involvement Guidance
- Establishment Scope Controls
- Strategic Focus on Reliability & Transparency
- Building GIS Capabilities



SOUTHCOAST CONSTRUCTION VISION

We are committed to being an adaptable construction team striving for excellence through trust-focused partnerships, transparency, and results. Our belief in teamwork, innovation, empowerment, and commitment will guide us to success.

TEAM BUILDING
We advocate for and seek to create an environment that supports employee development, promotes a work-life balance, supports career growth, and places individuals in opportunities to maximize their talents. Our team is human, social, intellectual, and experiential capital.

FOSTER PARTNERSHIPS
We believe in the power of partnerships and our commitment to give productive, positive and trusting relationships. We will:
1. Work cooperatively to build relationships
2. Recognize all our project teams, including pre-construction and construction contractors, intent to deliver quality projects
3. Establish and clarify expectations
4. Communicate clearly and with respect
5. Promote open communication
6. Trust others' skills and with respect
7. Listen to understand both perspectives when resolving disagreements with our partners
8. Give and welcome constructive feedback to achieve positive results
9. Self-reflect, seek help, remain adaptable to evolve and improve
10. Offer resources to foster creative solutions
11. Show loyalty in problem solving
12. Pursue solutions with mutual benefit

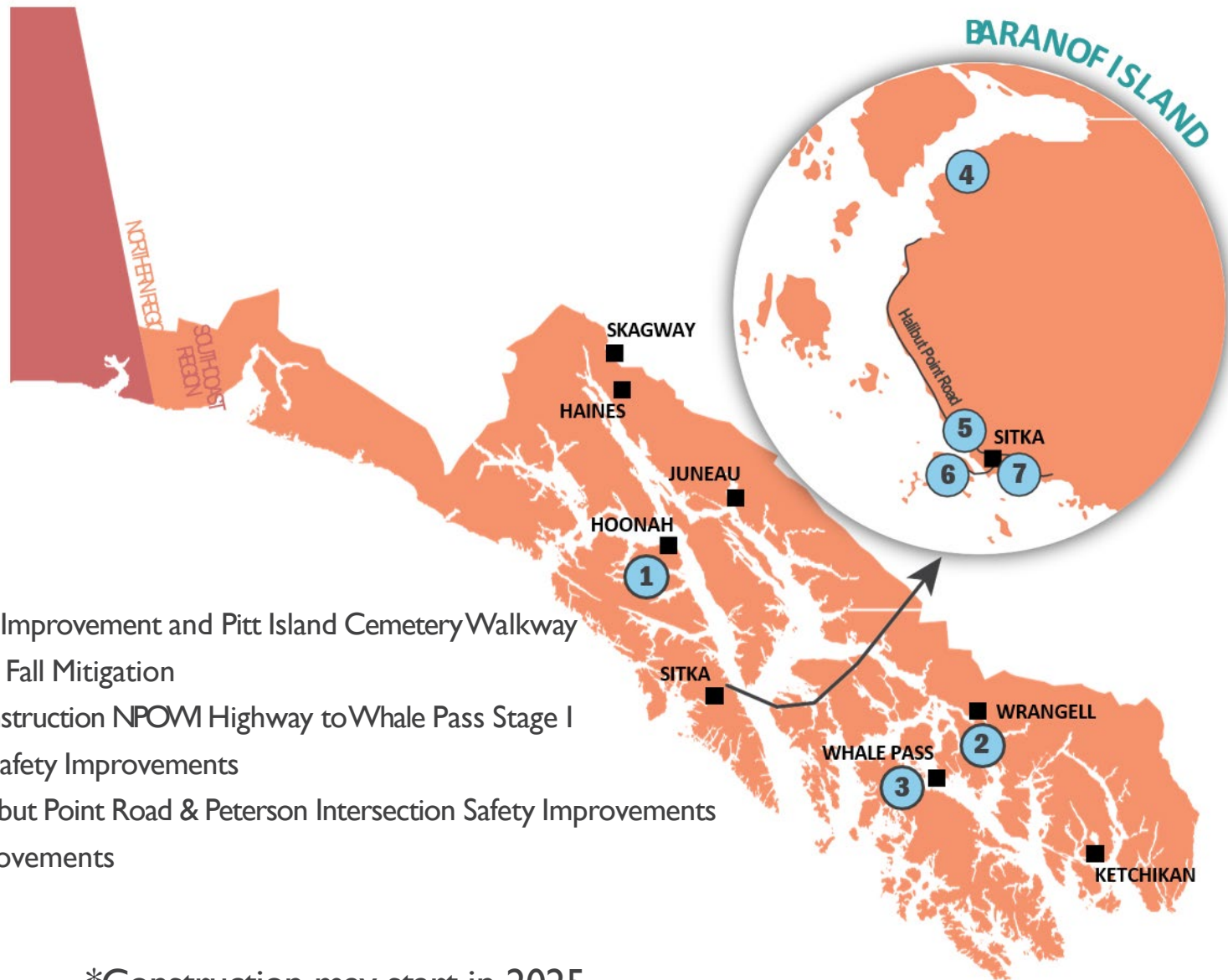
DEVELOPING TRUST
We are trusted to help shape project success through the planning and design phases. We will deliver a multi-million-dollar capital improvement construction program through construction inspection, documentation, testing, management, review, and closure.
We genuinely appreciate that we are trusted to provide reliable and safe infrastructure. We recognize this trust as continually be earned through integrity, aligning our intent, building our capabilities, delivering results, and constantly demonstrating high trust behaviors.
We recognize our spheres of influence and work within to build trust and produce quality results. We seek to support and resources to exceed expectations as we share shared goals, purposes, and overall success.

ACHIEVING SUCCESS
We believe and are committed to providing complete and quality projects meeting their purpose and need. We will consistently and efficiently deliver projects recognizing M&O's, the public's, and owner's burdens. CLOSURE STARTS ON DAY ONE and through daily efforts, we will ensure efficient project closure.
Mistakes occur because we try. We recognize mistakes are an opportunity to learn, not to be feared, and that enthusiastic resolution of those challenges is required.
To these ends, we are committed to providing support and resources to exceed expectations as we deliver this critical program.



SOUTHCOAST REGION | 2024

CONSTRUCTION SOUTHEAST



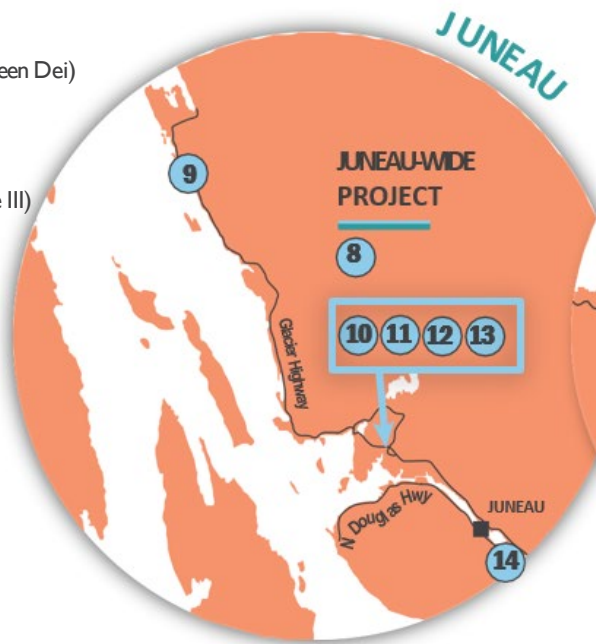
*Construction may start in 2025



SOUTHCOAST REGION | 2024

CONSTRUCTION SOUTHEAST

- 8 | Roadways & Culverts (Emergency Repairs)
- 9 | Bridget Cove Creek Culvert Replacement
- 10 | Brotherhood Bridge Trail Improvements (Kaxdigoowu Heen Dei)
- 11 | Egan Yandukin Intersection Improvements (Stage I)
- 12 | Glacier Highway Chip Seal - Industrial to Roundabout
- 13 | Waydelich Creek Retaining Wall
- 14 | Douglas Highway Resurface and Sidewalk Repairs (Stage III)

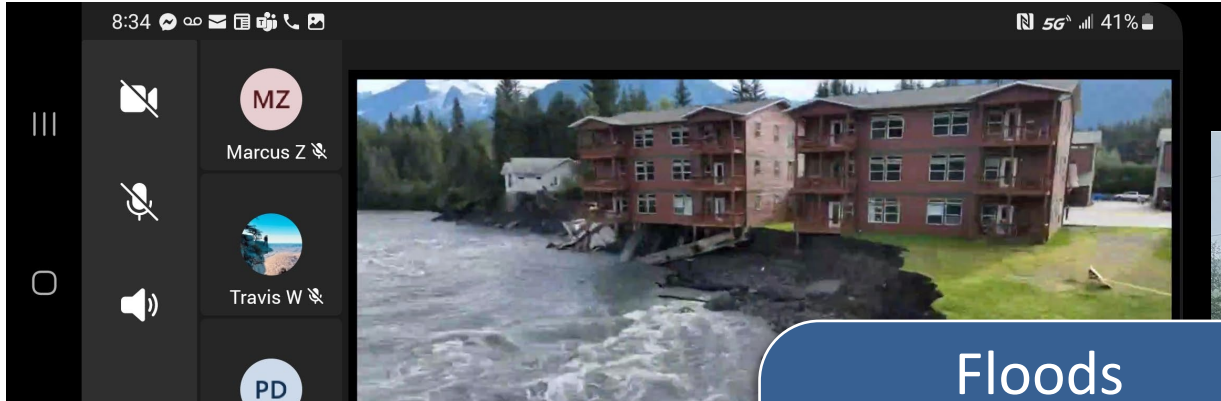


- 15 | Terminal Building Improvements
- 16 | Wolfe Point Rock Slope Stabilization*
- 17 | Gravina Revilla Existing Berths
- 18 | North Tongass Highway Resurfacing: Airport Ferry Terminal to Ward Creek Bridge Stage I*
- 19 | Tongass Avenue Improvements
- 20 | Sayles/Gorge Bridge Replacement
- 21 | Water Street Bridge Strengthening
- 22 | Stedman & Deermount Intersection and Safety Improvements
- 23 | Haines Highway Reconstruction Milepost 20.0-25.3 (Stage III)
- 24 | Haines Highway Milepost 12.2-20 (Stage II)
- 25 | Anadromous Culverts (Emergency Repairs)
- 26 | State Street Pavement Rehabilitation

*Construction may start in 2025



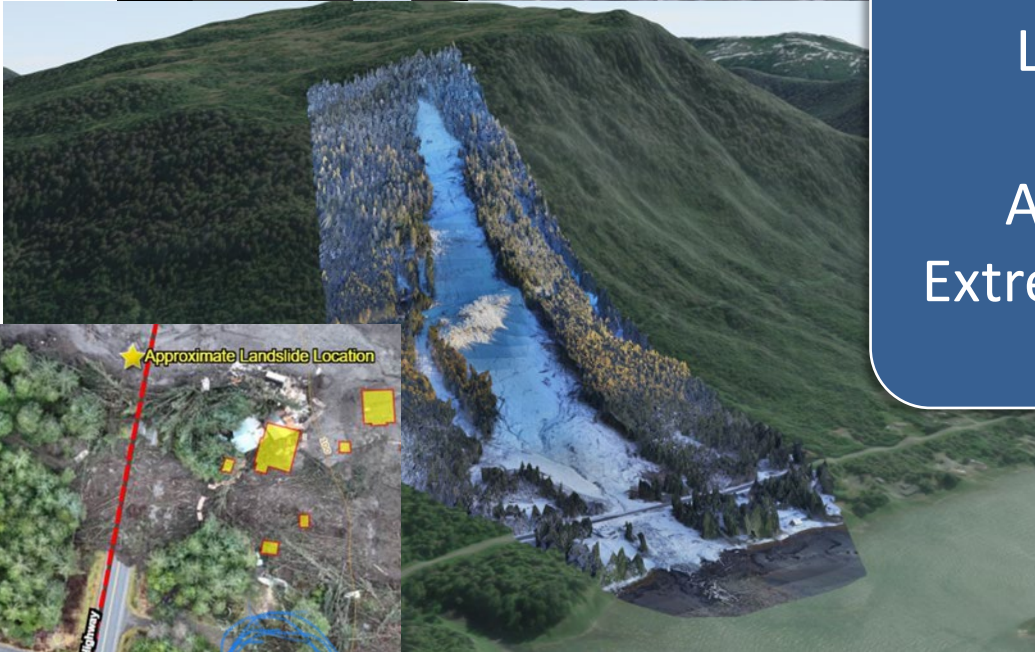
A Community Partner Through Disasters



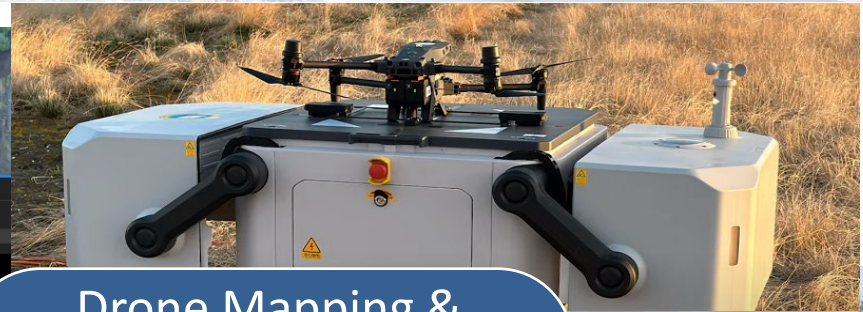
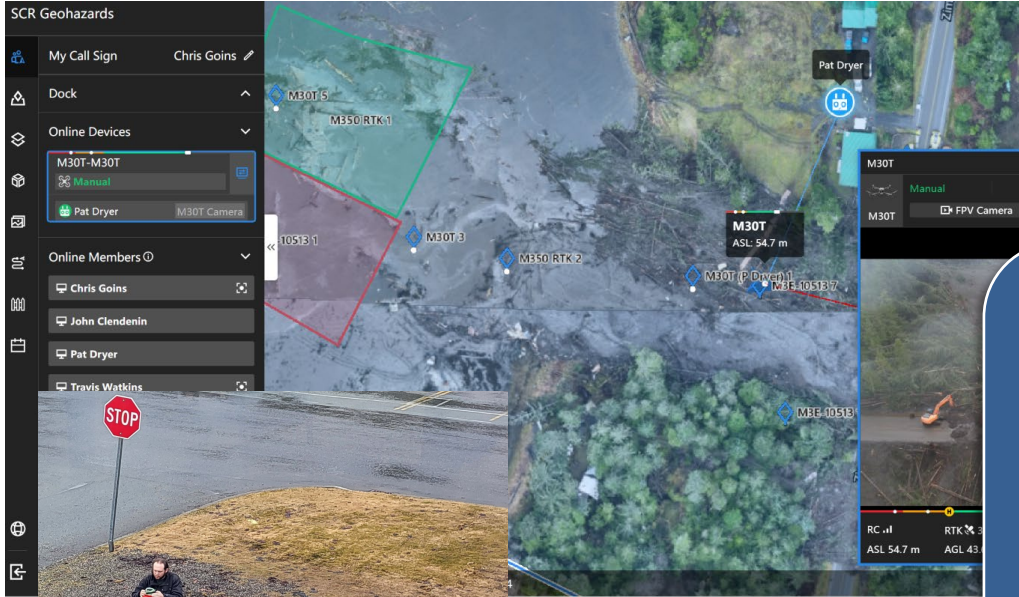
8 mile Big Salt



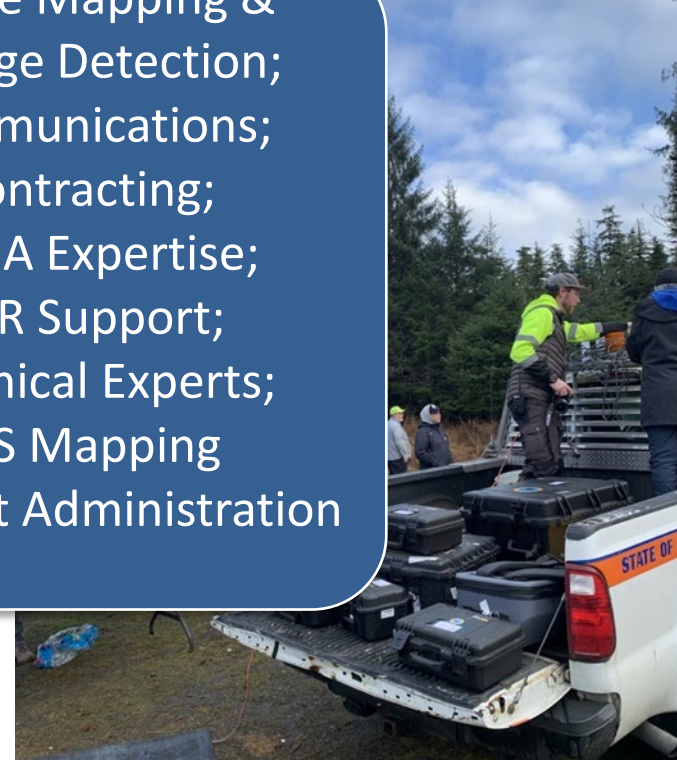
Floods
Landslides
Rockfalls
Avalanches
Extreme Weather
SAR



A Modernizing DOT – Tools to the Table



Drone Mapping &
Change Detection;
Communications;
Contracting;
FEMA Expertise;
SAR Support;
Technical Experts;
GIS Mapping
Contract Administration



<https://www.youtube.com/watch?v=Oj-snzosgoQAlaska>
<https://www.youtube.com/watch?v=Wrljirdt4L4>