



# **SOUTHEAST ALASKA**

## **TRANSPORTATION PLAN**

# **Breakout Session Preview**

**Jill Melcher, Planning Chief DOT&PF  
Southcoast Region**

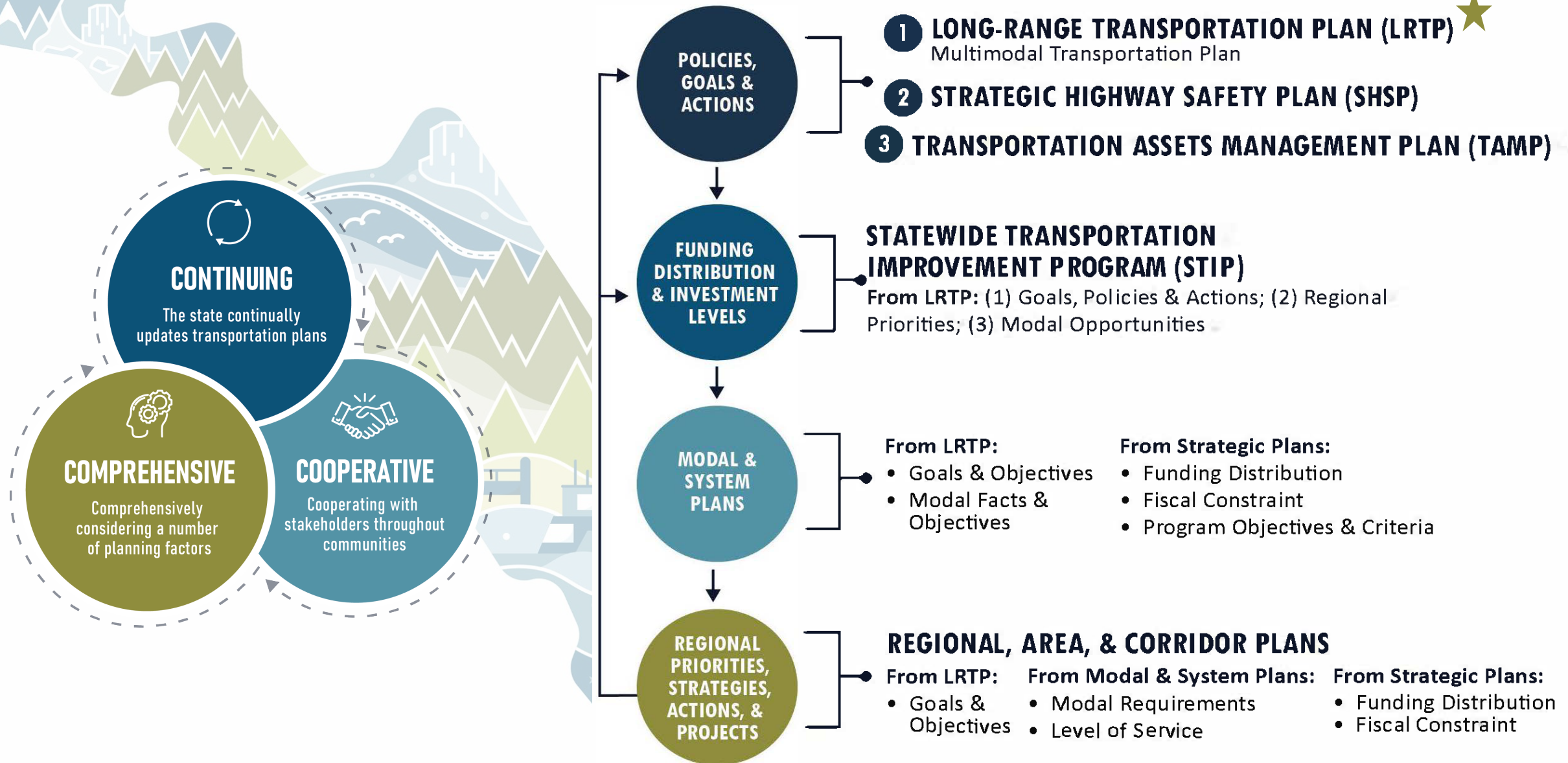




# Southeast Alaska Transportation Plan Update

- 20-year multimodal plan to guide future public investments in transportation infrastructure in Southeast Alaska
- Improve mobility for residents, goods, and services throughout Southeast Alaska, considering area's unique transportation needs and challenges
- Includes all transportation modes, will integrate with the recently adopted Alaska Marine Highway System Long-Range Plan
- Last update was adopted in 2004, so a lot of changes to consider!

# FAMILY OF PLANS





# **This Session Will Address...**

**The  
Planning  
Process**

**Key  
Transportation  
Issues**

**Impacts of Key Industries  
and Economic Drivers on  
the Southeast  
Transportation System**



# Who Should Attend?